



Cleveland State University

Office of the University Architect

FINISH STANDARDS

PUBLISHED: MARCH 2014

UPDATED: APRIL 2024



Cleveland State University

Office of the University Architect

FINISH STANDARDS

Finish Standards have been developed by the Office of the University Architect to help provide a more cohesive look to the campus as a whole, as well as allowing for more efficient Zone Maintenance and faster project delivery. Several deciding factors went into these selections, including cost, maintenance, and availability, as well as environmental factors such as recycled content and indoor air quality. All requests for new finishes are to go through the FAST Service Request process via the Facilities Management website at <https://www.csuohio.edu/facilities-management/facilities-management-0>



These standards shall be used for all FAST Service Requests.

OUA projects may deviate from (but coordinate with) these standards with written approval from the OUA Interior Designer and Facilities Director.

*Digital/print copies of Finish Standards DO NOT match actual samples.
Office of the University Architect and Facilities Management have sample binders for use on FAST Requests.*



Cleveland State University

Office of the University Architect

PAINT STANDARDS

Finish Standards are based upon the ability of spaces to be “maintainable and transferrable”. Standardized colors provide a more cohesive look to the campus as a whole, as well as allowing for more efficient Zone Maintenance. Several deciding factors went into these selections, including what office colors are already primarily used on campus (Dover White, Antique White, Bone White), utilizing the “Official University Color Palette” but toning the colors down to be suitable for wall-sized applications, and specifying a paint product that has zero VOCs for better indoor air quality.

GENERAL PAINT COLORS:

SW 7006	Extra White
SW 6385	Dover White
SW 6119	Antique White
SW 6112	Biscuit (aka Bone White)
SW 6365	Cachet Cream
SW 6036	Angora
SW 7064	Passive

ACCENT WALL COLORS:

SW 7072	Online
SW 7074	Software
SW 7075	Web Gray
SW 6802	Jacaranda
SW 6801	Regale Blue
SW 6773	Rapture Blue
CUSTOM	University Green
SW 6725	Pickle
SW 6717	Lime Rickey
SW 6703	Frolic
SW 6675	Afternoon
SW 6655	Adventure Orange
SW 6115	Totally Tan
SW 6106	Kilim Beige
SW 7690	Townhall Tan

LARGE PROJECTS and/or PUBLIC SPACES:

Must be approved by the Office of the University Architect.

SPECIFICATIONS:

Paint to be Sherwin Williams zero VOC Harmony.

Offices/Suites/Classrooms to be egg-shell finish.

Doors/Frames and Public Corridors to be semi-gloss finish.



**BREAKTHROUGH
INNOVATION.**

**EXCELLENT
PERFORMANCE.**

**EXCLUSIVE
FORMULA.**

Harmony Paint — long known for its premium performance in a zero VOC formula — now contains Formaldehyde Reducing Technology, which helps promote better indoor air quality by reducing airborne concentrations of formaldehyde and other aldehydes. This unique technology actually helps reduce the levels of volatile organic compounds (VOCs) from potential sources like insulation, carpet, cabinets, fabrics and other building materials.

In addition, Harmony contains Odor Eliminating Technology, which reduces ambient odors of organic origin, like pet, cooking and smoke odors — making it ideal for multi-family, healthcare, institutional, commercial and residential projects. This zero VOC formula meets the most stringent VOC regulations. Harmony contains anti-microbial agents which minimize deterioration of the paint film caused by mold and mildew and extend the useful life of the paint. Harmony Paint provides great coverage, a finish that lasts, reduces interior odors and helps promote better indoor air quality.

HARMONY KEY BENEFITS

- Formaldehyde Reducing Technology helps improve indoor air quality by reducing VOCs from possible sources like insulation, carpet, cabinets and fabrics.*
- Odor Eliminating Technology helps reduce common indoor odors so rooms stay fresher, longer.*
- Anti-microbial agents inhibit the growth of mold and mildew on the paint surface and inhibit the growth of bacterial odors.
- Zero VOC formula tinted with ColorCast Ecotoner® Colorants that do not add VOCs when tinted.
- Great hide and a durable finish that withstands frequent washings.
- Available in flat, egg-shell and semi-gloss.

*The length of time Harmony actively reduces odors and formaldehyde depends on the concentration, the frequency of exposure and the amount of painted surface area.

ALSO AVAILABLE:

HARMONY® INTERIOR LATEX WALL PRIMER

- Primes, seals and hides.
- Prepares the surface to provide good topcoat performance.
- Zero VOCs.





Cleveland State University

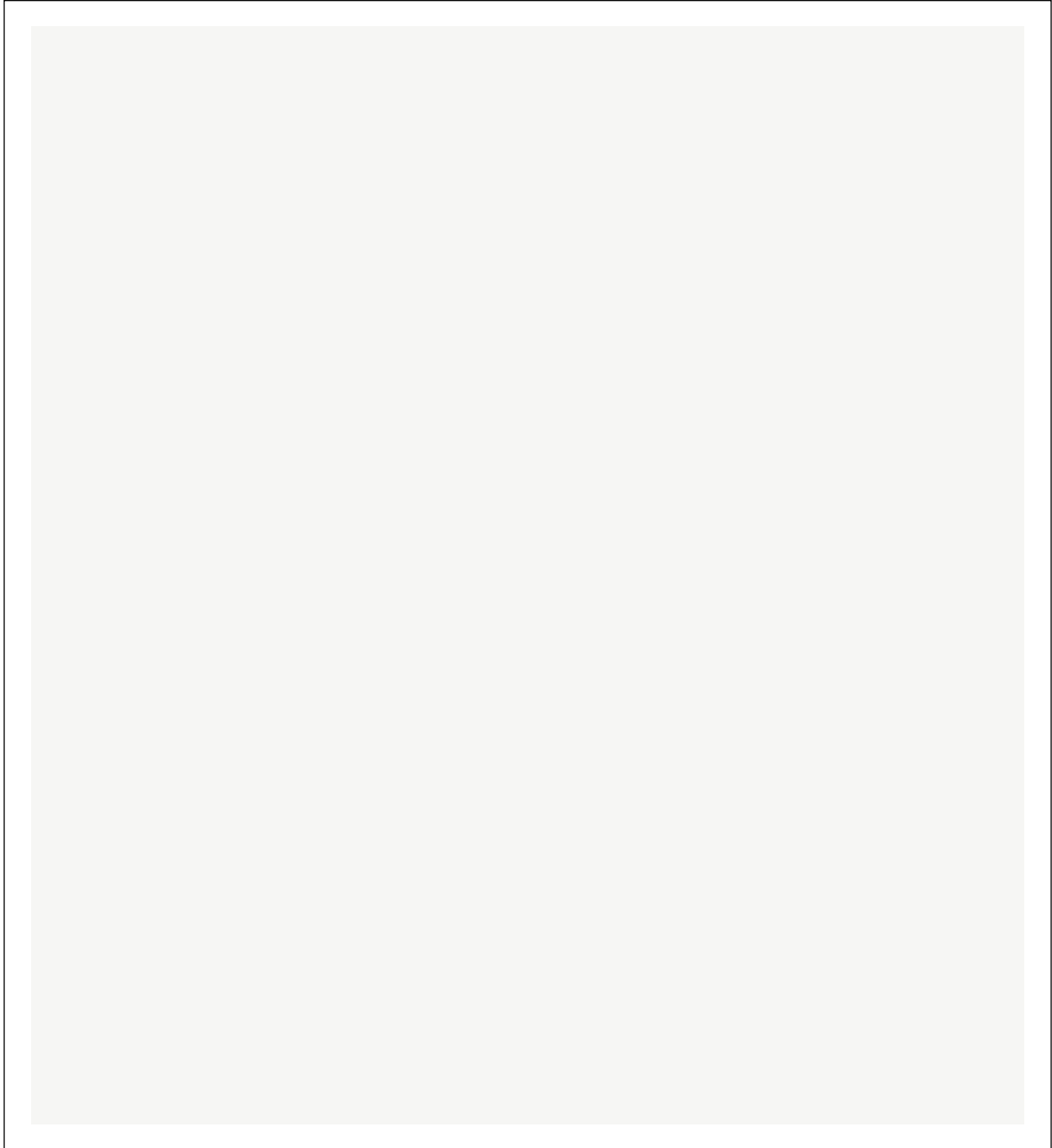
Office of the University Architect

GENERAL PAINT SAMPLES



Cleveland State University

Office of the University Architect



GENERAL PAINT

JUNE 2018

SHERWIN WILLIAMS

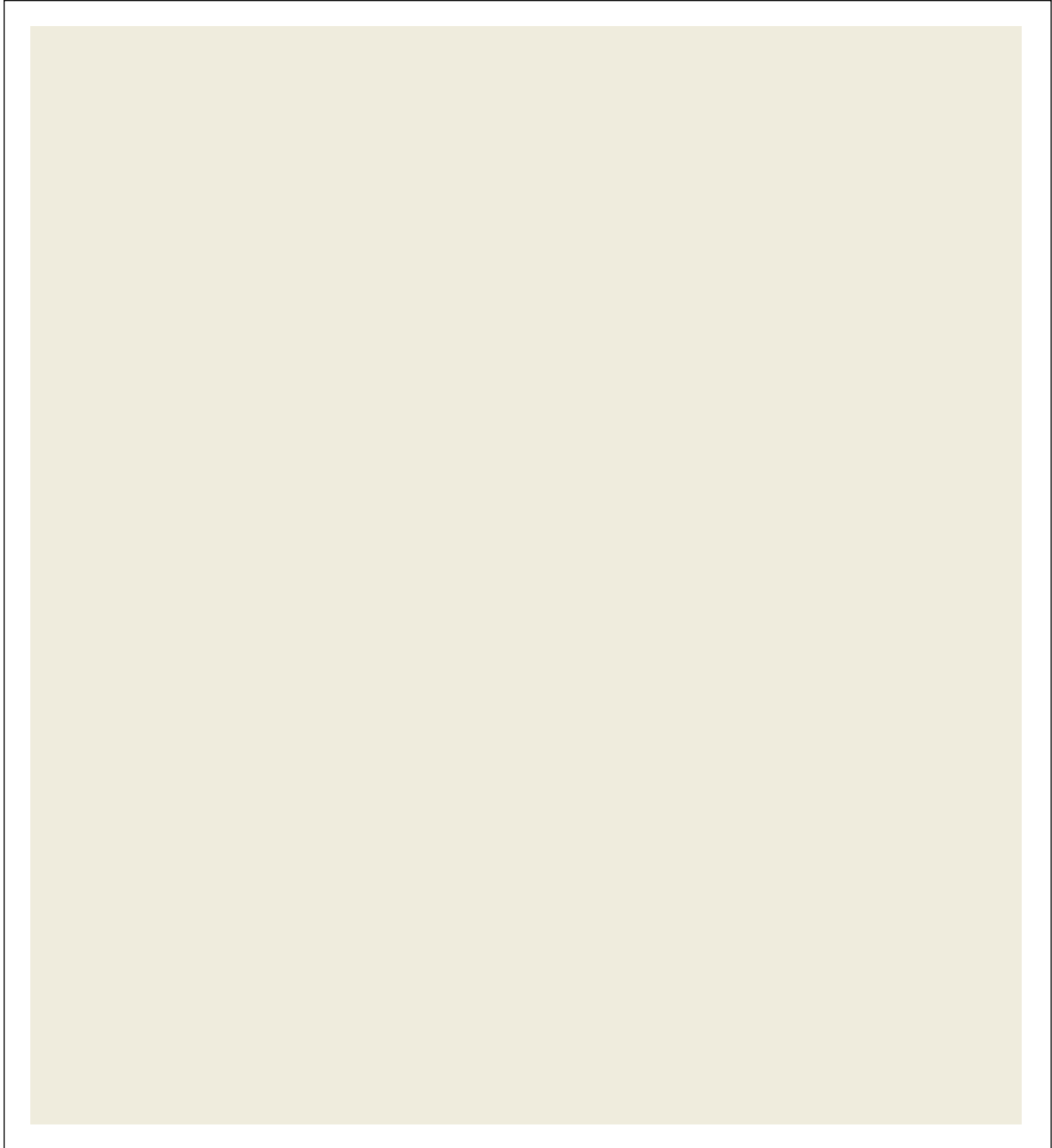
SW 7006

EXTRA WHITE



Cleveland State University

Office of the University Architect



GENERAL PAINT

MARCH 2014

SHERWIN WILLIAMS

SW 6385

DOVER WHITE



Cleveland State University

Office of the University Architect



GENERAL PAINT

MARCH 2014

SHERWIN WILLIAMS

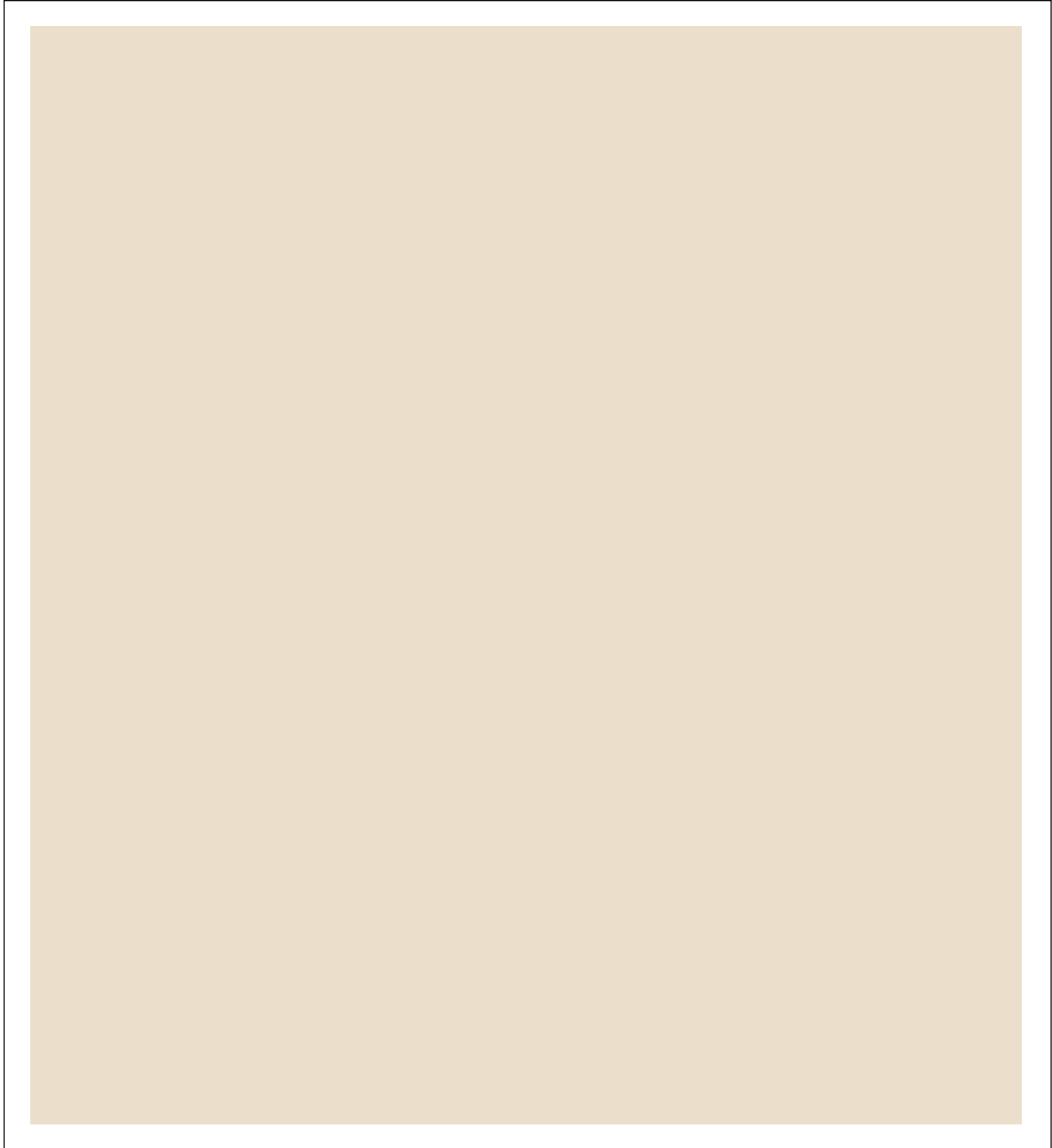
SW 6119

ANTIQUÉ WHITE



Cleveland State University

Office of the University Architect



GENERAL PAINT

MARCH 2014

SHERWIN WILLIAMS

SW B6112

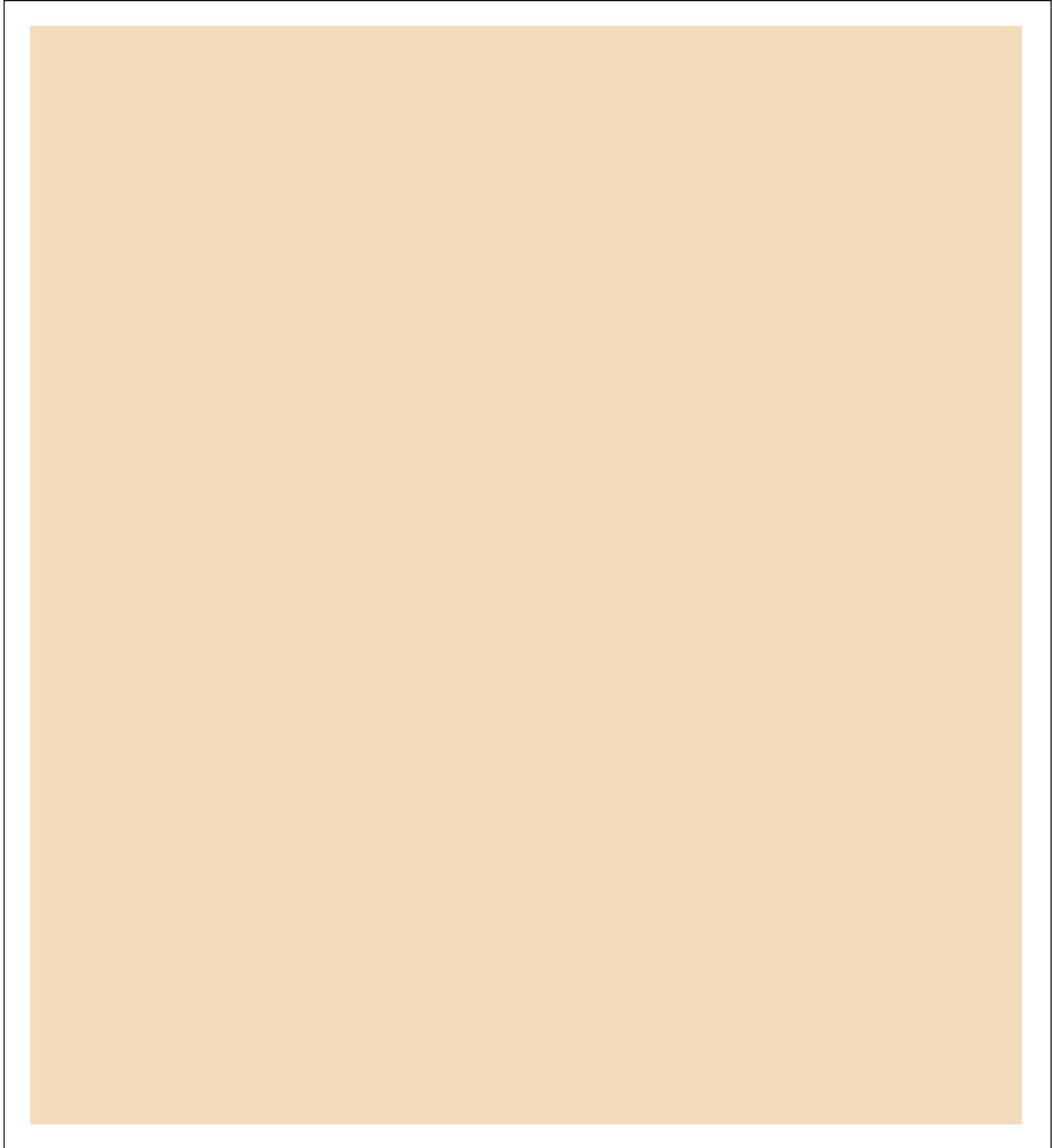
BISCUIT

(aka BONE WHITE)



Cleveland State University

Office of the University Architect



GENERAL PAINT

MARCH 2014

SHERWIN WILLIAMS

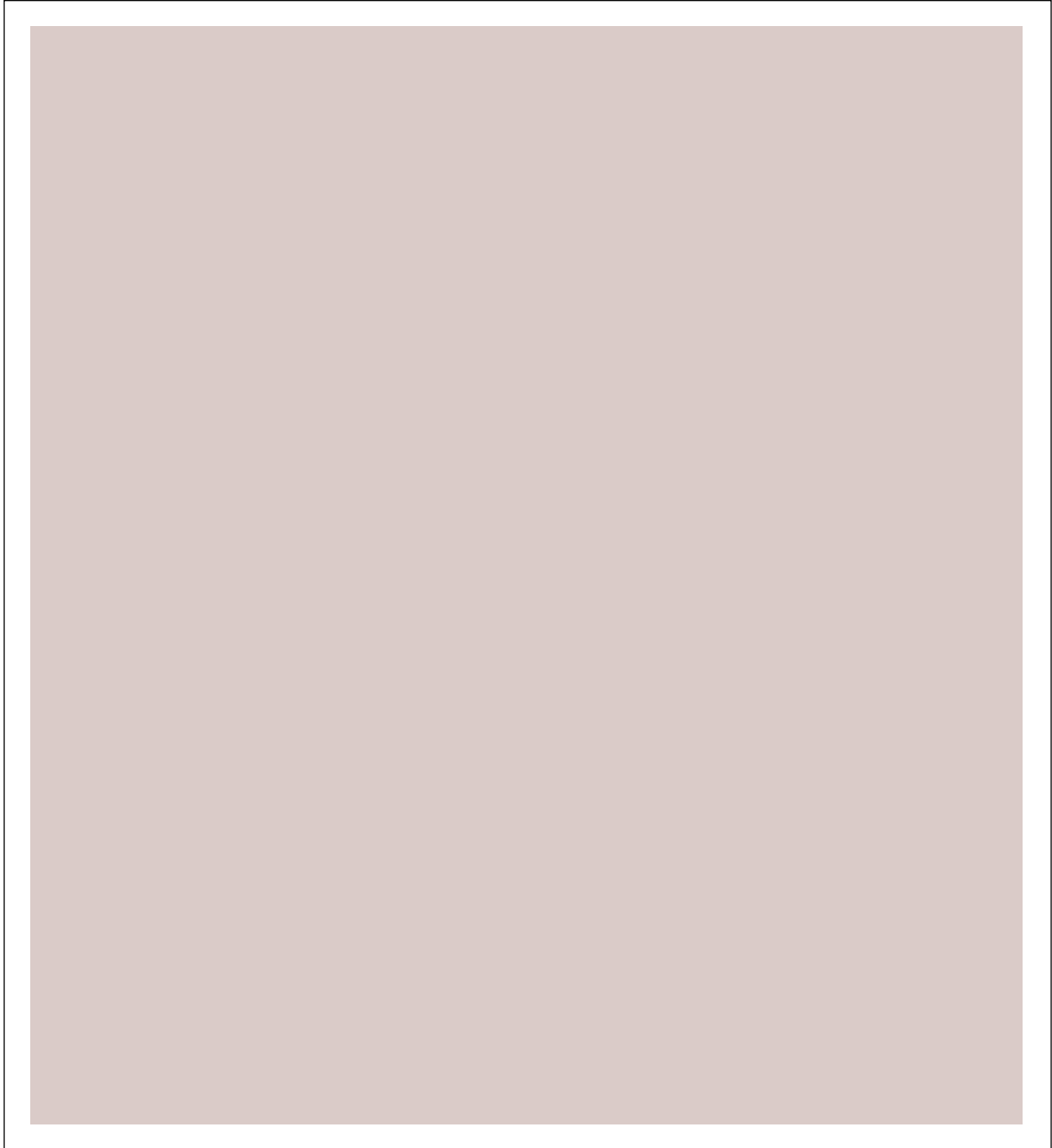
SW 6365

CACHET CREAM



Cleveland State University

Office of the University Architect



GENERAL PAINT

JUNE 2018

SHERWIN WILLIAMS

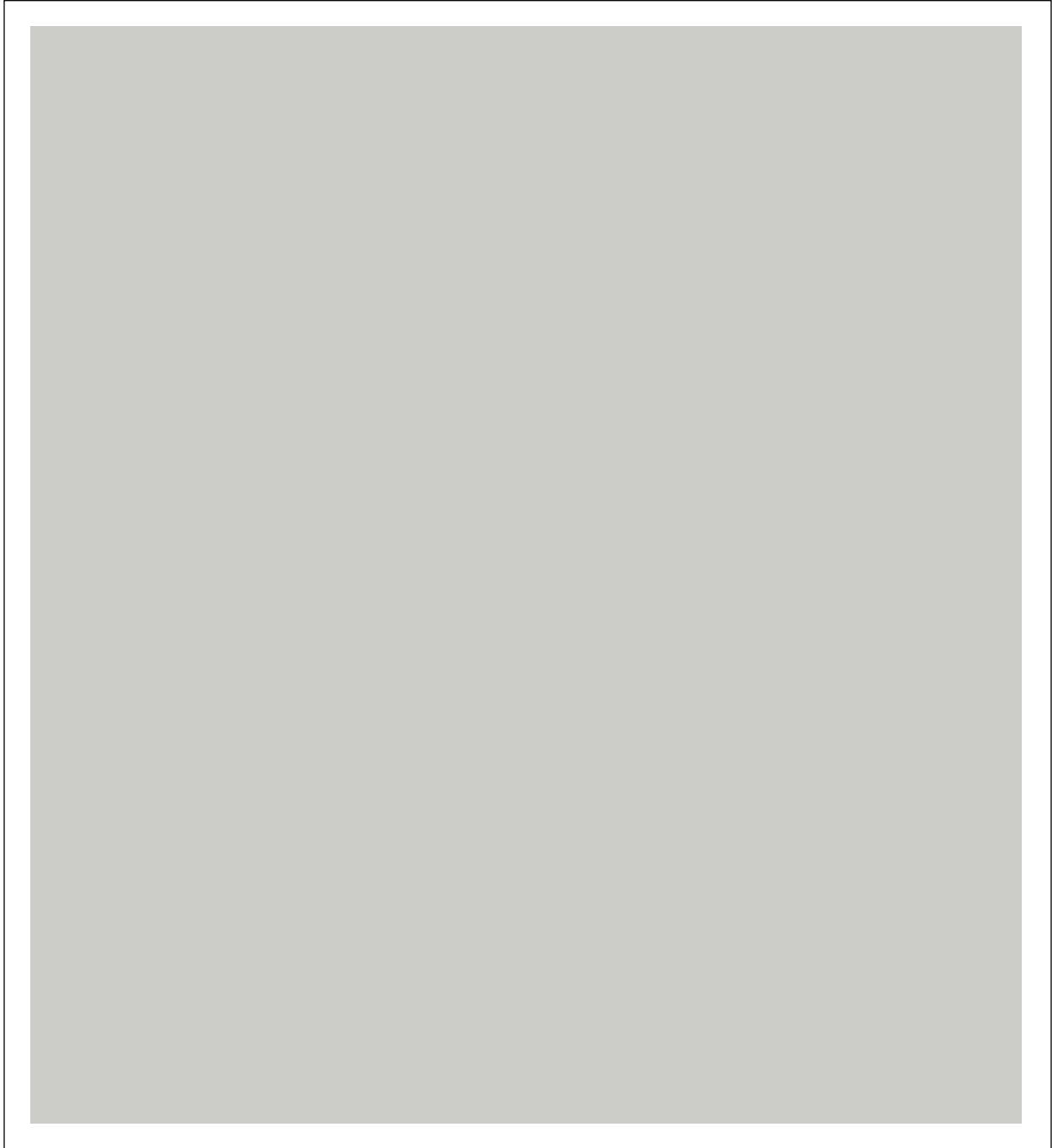
SW 6036

ANGORA



Cleveland State University

Office of the University Architect



GENERAL PAINT

MARCH 2014

SHERWIN WILLIAMS

SW 7064

PASSIVE



Cleveland State University

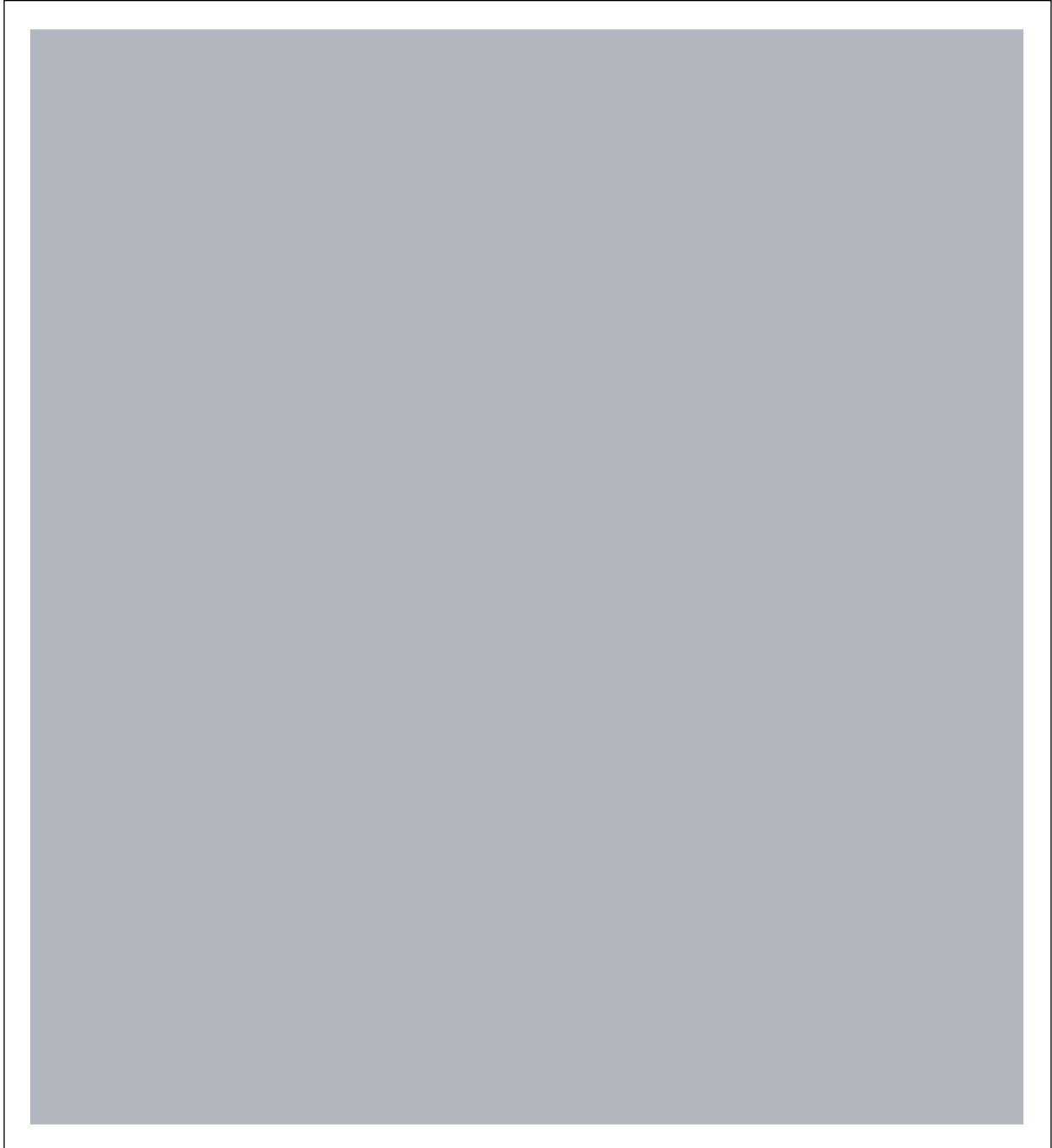
Office of the University Architect

ACCENT PAINT SAMPLES



Cleveland State University

Office of the University Architect



ACCENT PAINT

JUNE 2018

SHERWIN WILLIAMS

SW 7072

ONLINE



Cleveland State University

Office of the University Architect



ACCENT PAINT

MARCH 2021

SHERWIN WILLIAMS

SW 7074

SOFTWARE



Cleveland State University

Office of the University Architect



ACCENT PAINT

MARCH 2014

SHERWIN WILLIAMS

SW 7075

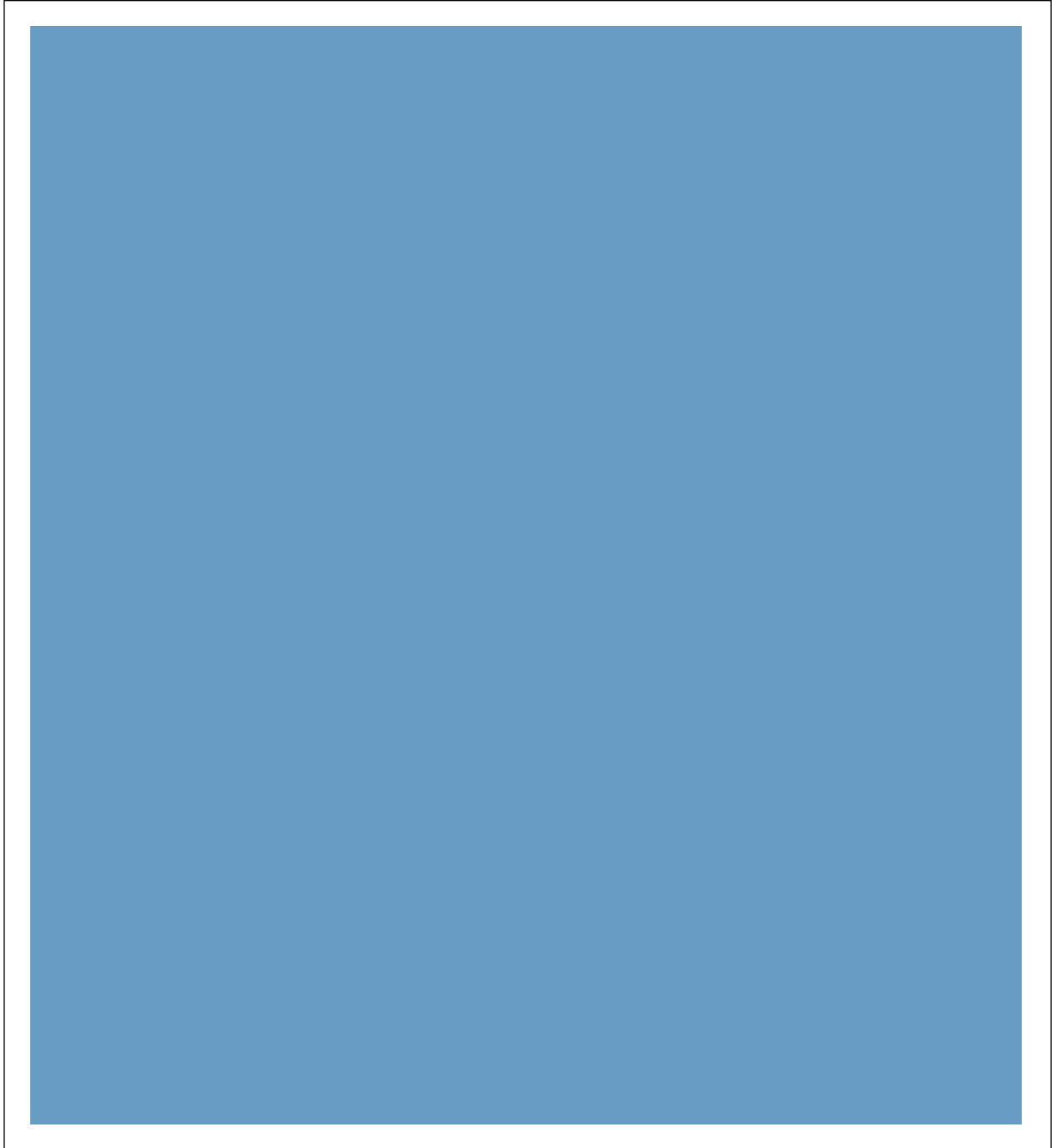
WEB GRAY

(matches Johnsonite Charcoal base)



Cleveland State University

Office of the University Architect



ACCENT PAINT

MARCH 2014

SHERWIN WILLIAMS

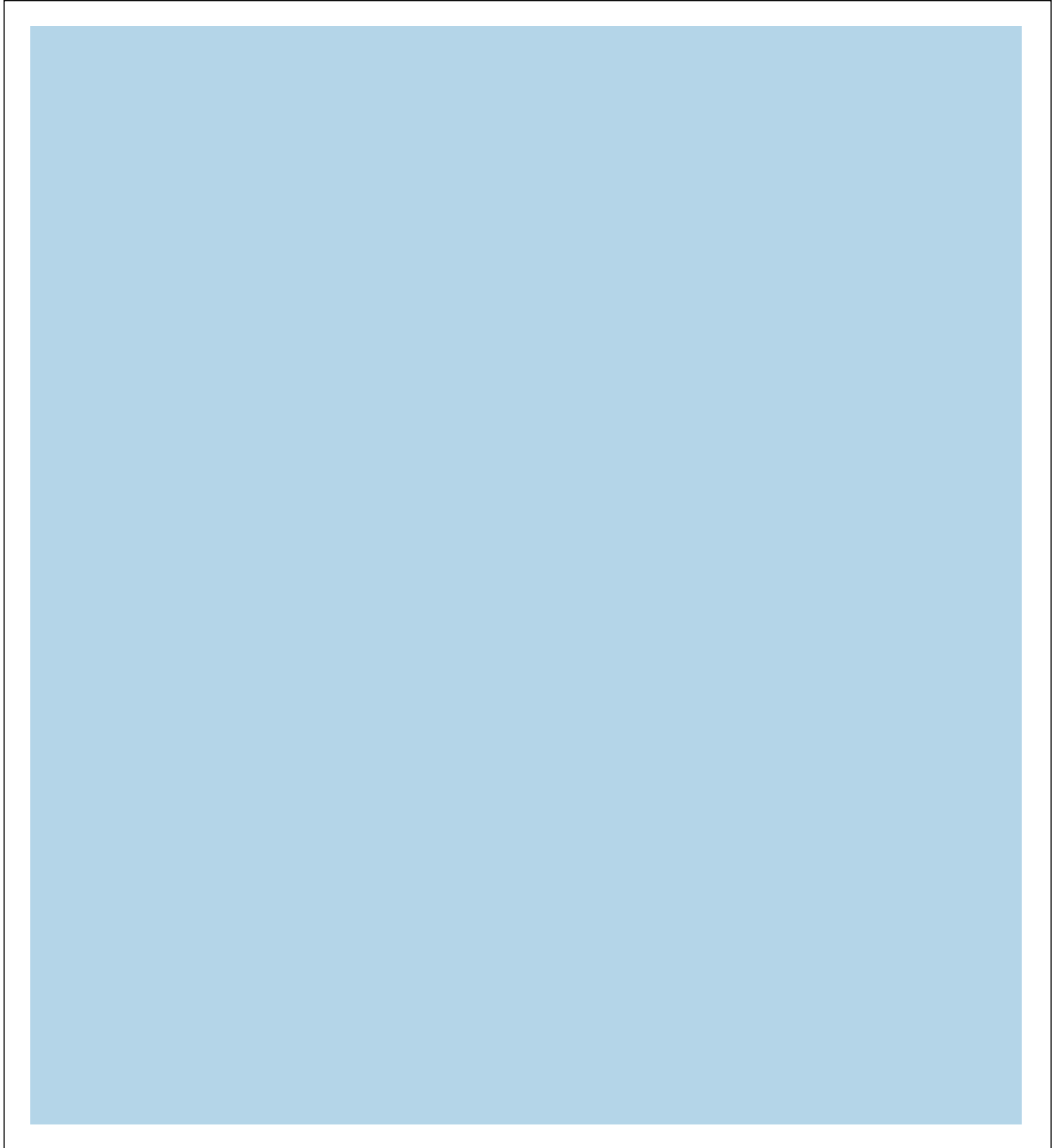
SW 6802

JACARANDA



Cleveland State University

Office of the University Architect



ACCENT PAINT

MARCH 2014

SHERWIN WILLIAMS

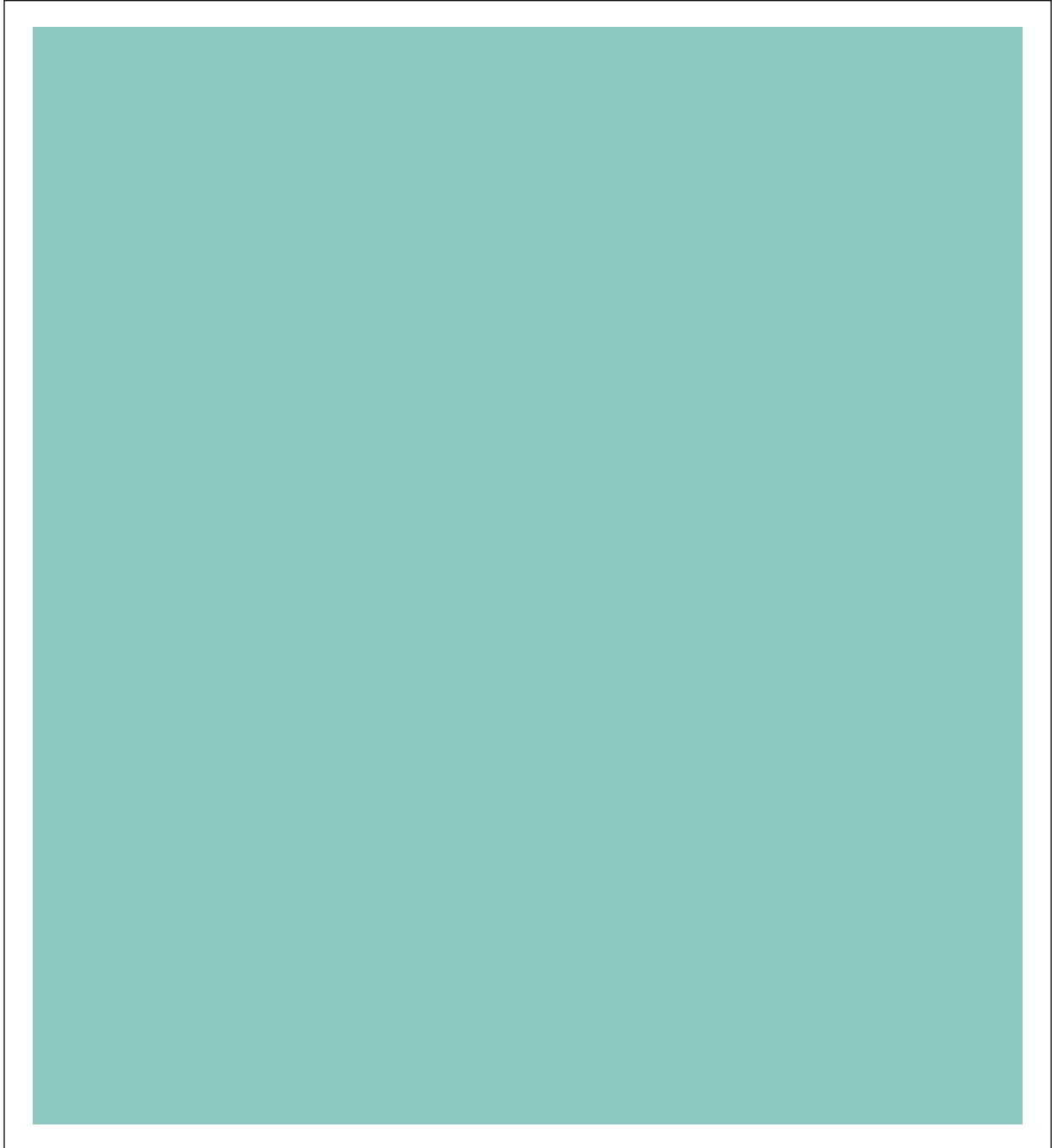
SW 6801

REGALE BLUE



Cleveland State University

Office of the University Architect



ACCENT PAINT

MARCH 2014

SHERWIN WILLIAMS

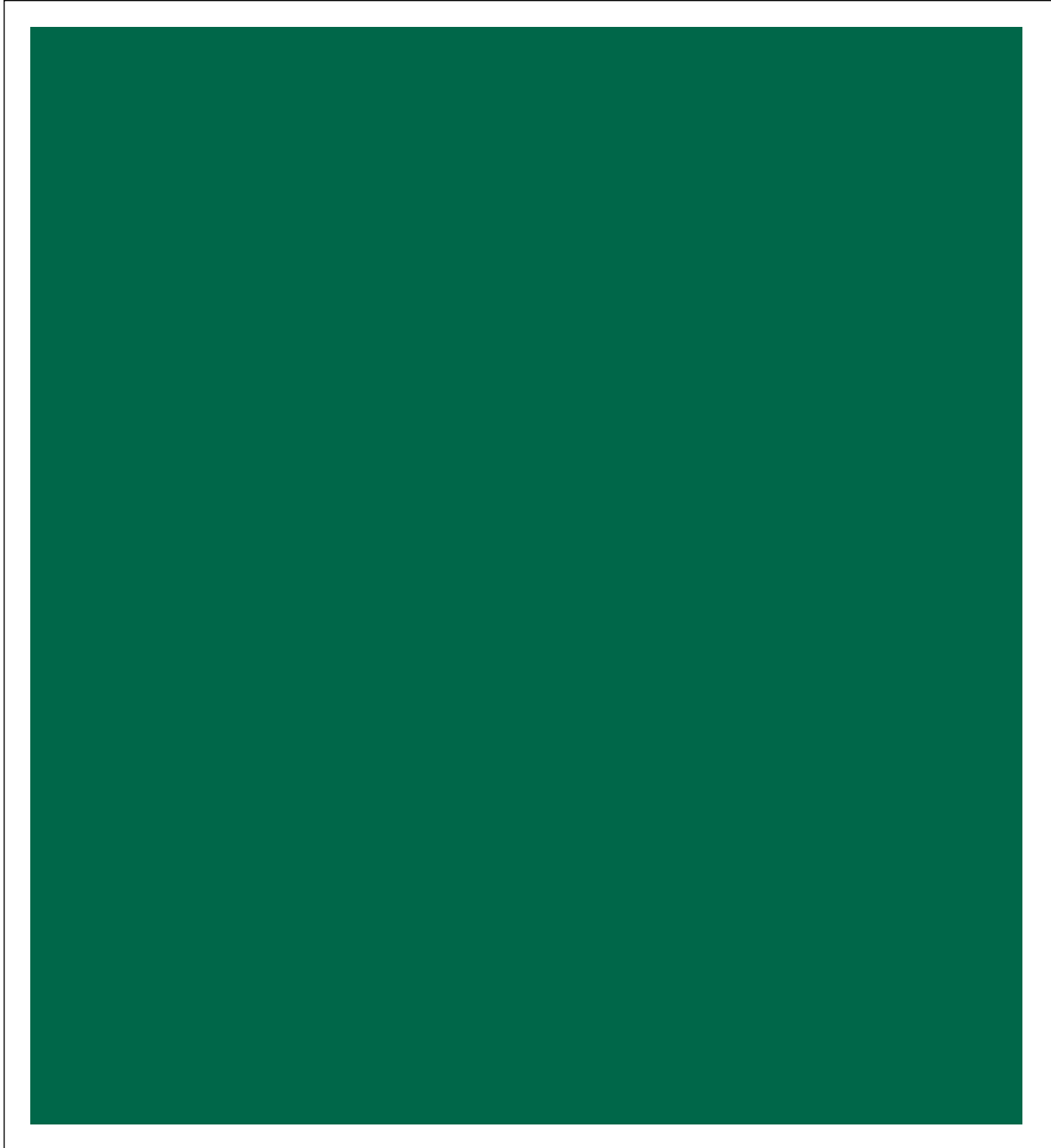
SW 6773

RAPTURE BLUE



Cleveland State University

Office of the University Architect



ACCENT PAINT

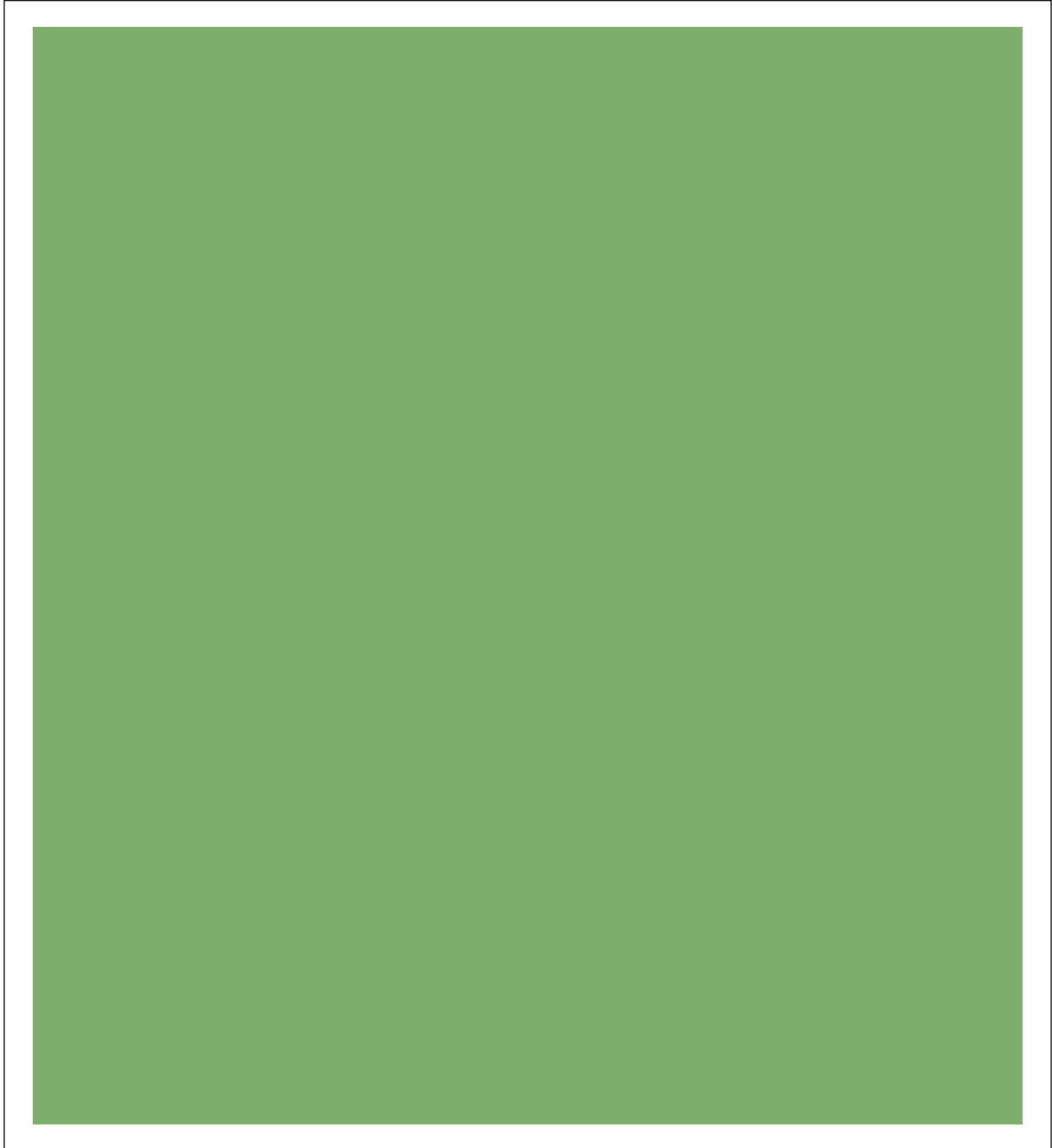
MARCH 2014

SHERWIN WILLIAMS
CUSTOM
UNIVERSITY GREEN



Cleveland State University

Office of the University Architect



ACCENT PAINT

APRIL 2024

SHERWIN WILLIAMS

SW 6725

PICKLE



Cleveland State University

Office of the University Architect



ACCENT PAINT

MARCH 2014

SHERWIN WILLIAMS

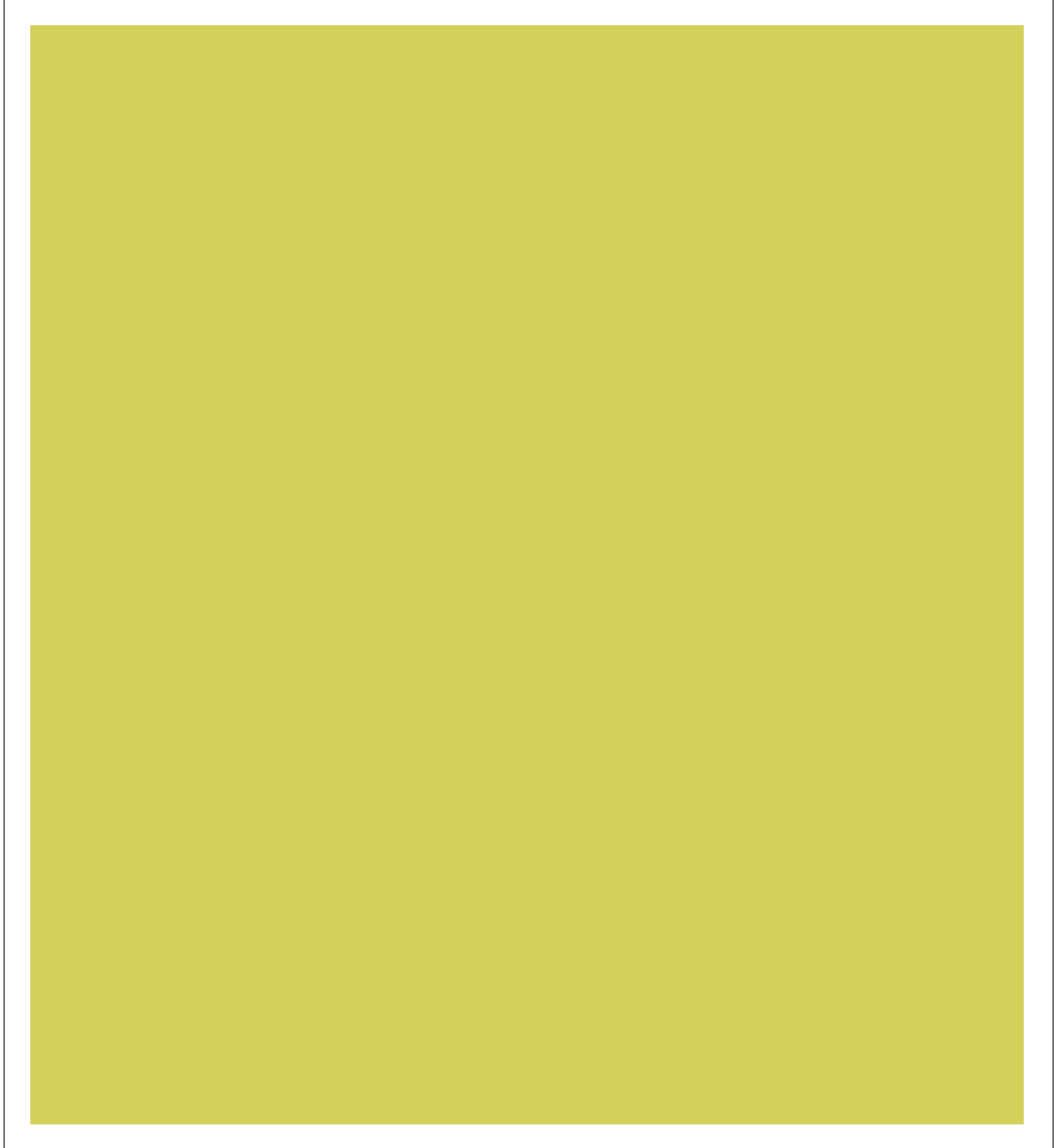
SW 6717

LIME RICKEY



Cleveland State University

Office of the University Architect



ACCENT PAINT

MARCH 2014

SHERWIN WILLIAMS

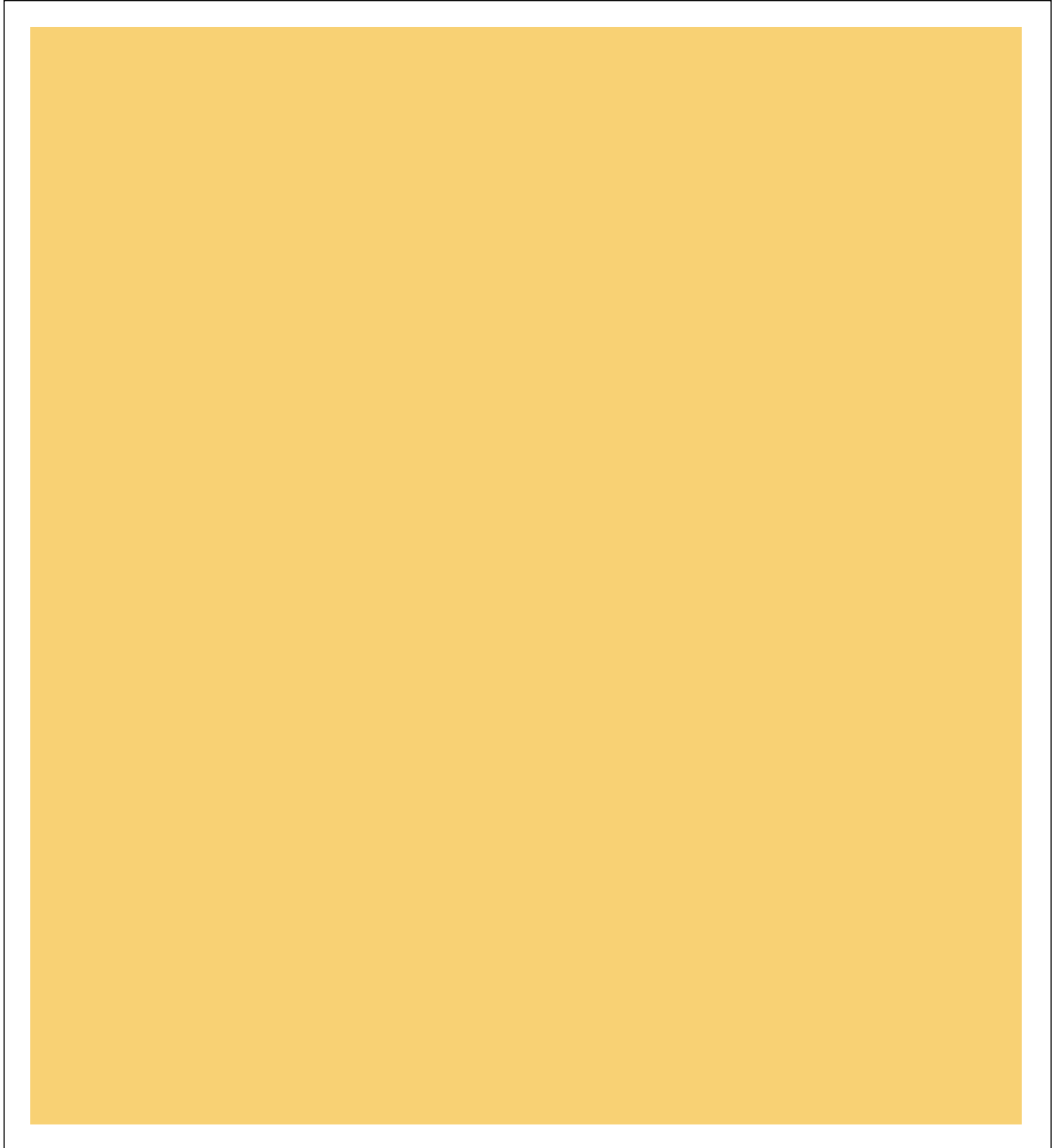
SW 6703

FROLIC



Cleveland State University

Office of the University Architect



ACCENT PAINT

MARCH 2014

SHERWIN WILLIAMS

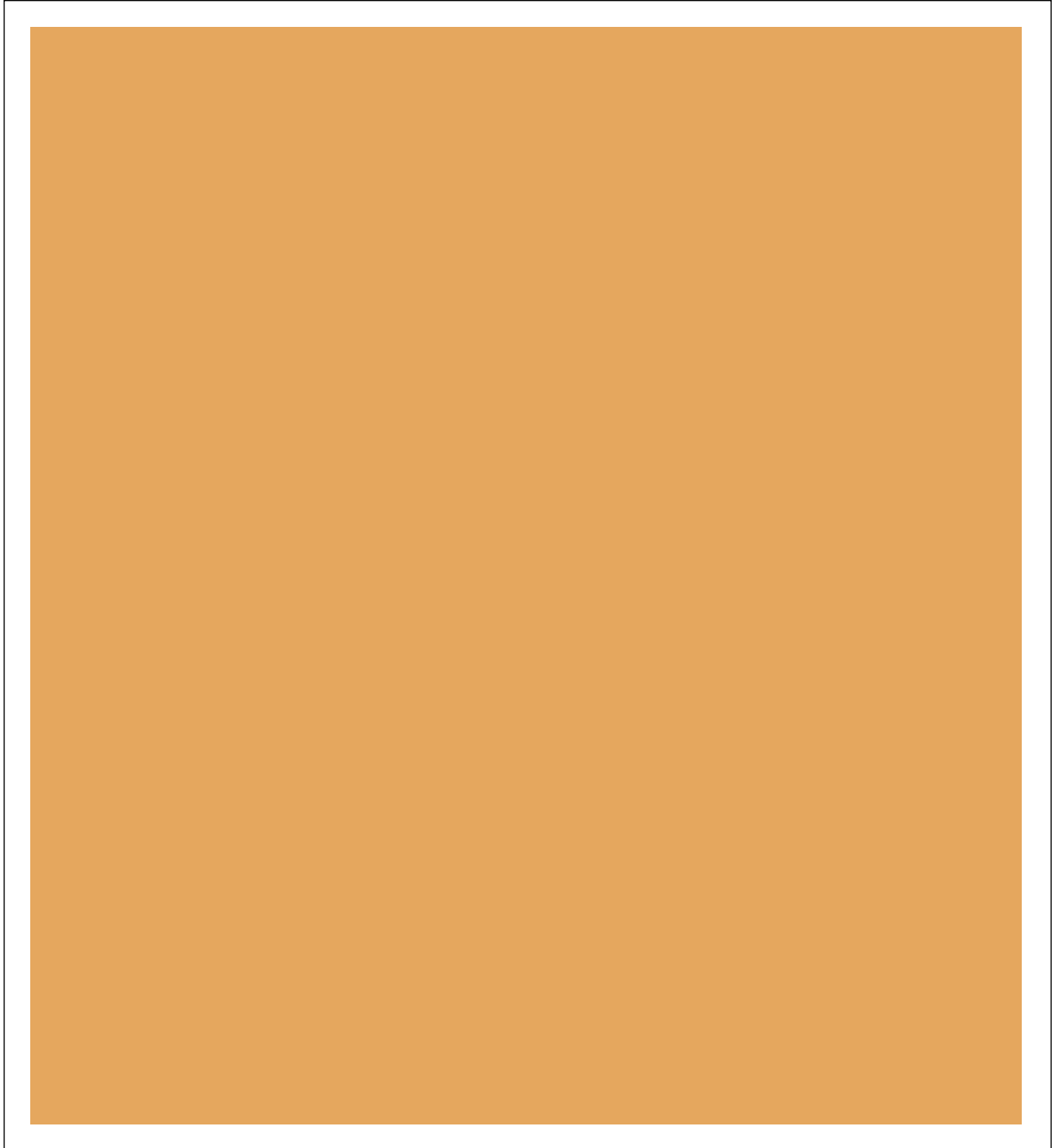
SW 6675

AFTERNOON



Cleveland State University

Office of the University Architect



ACCENT PAINT

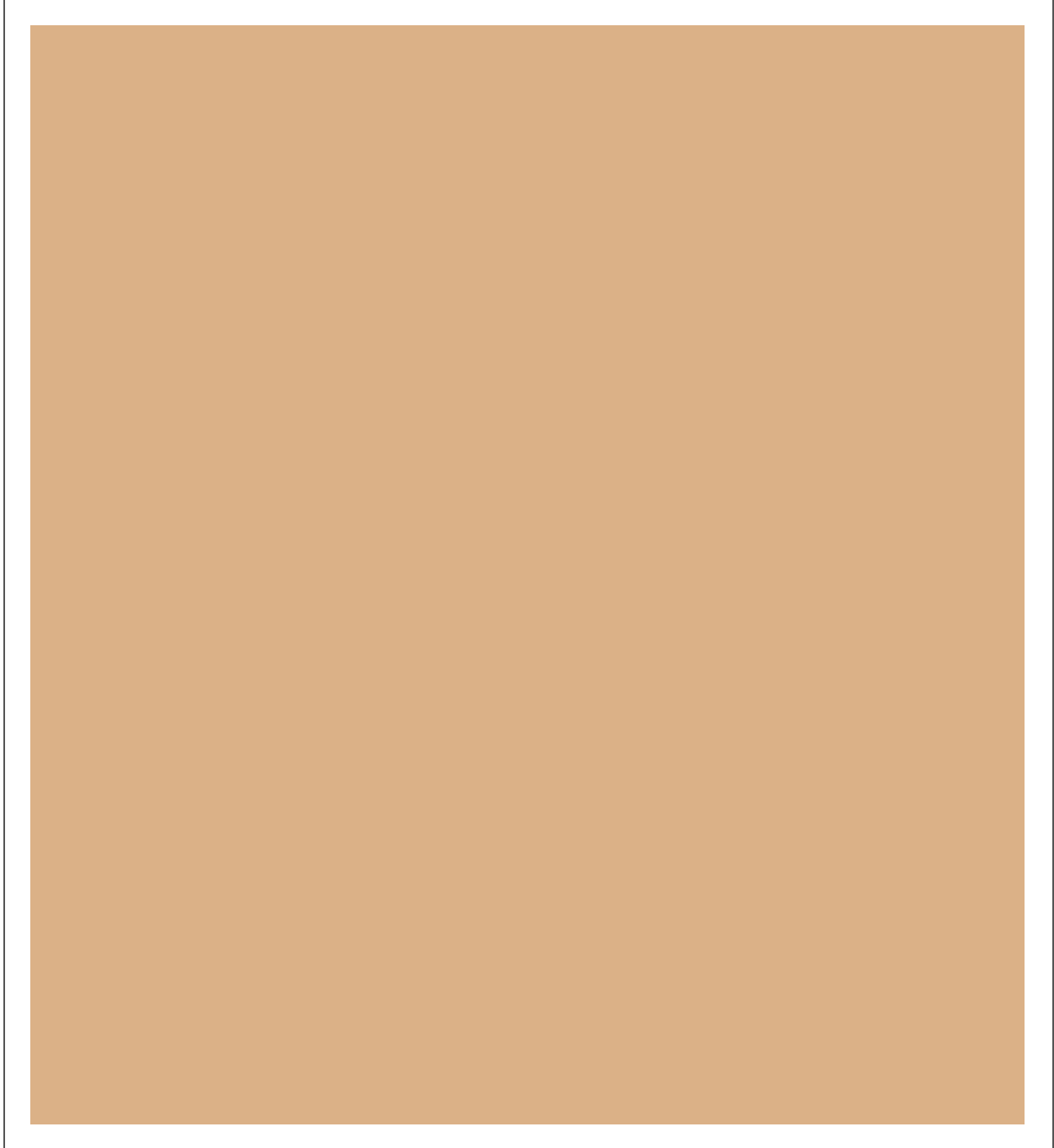
MARCH 2014

SHERWIN WILLIAMS
SW 6655
ADVENTURE ORANGE



Cleveland State University

Office of the University Architect



ACCENT PAINT

APRIL 2024

SHERWIN WILLIAMS

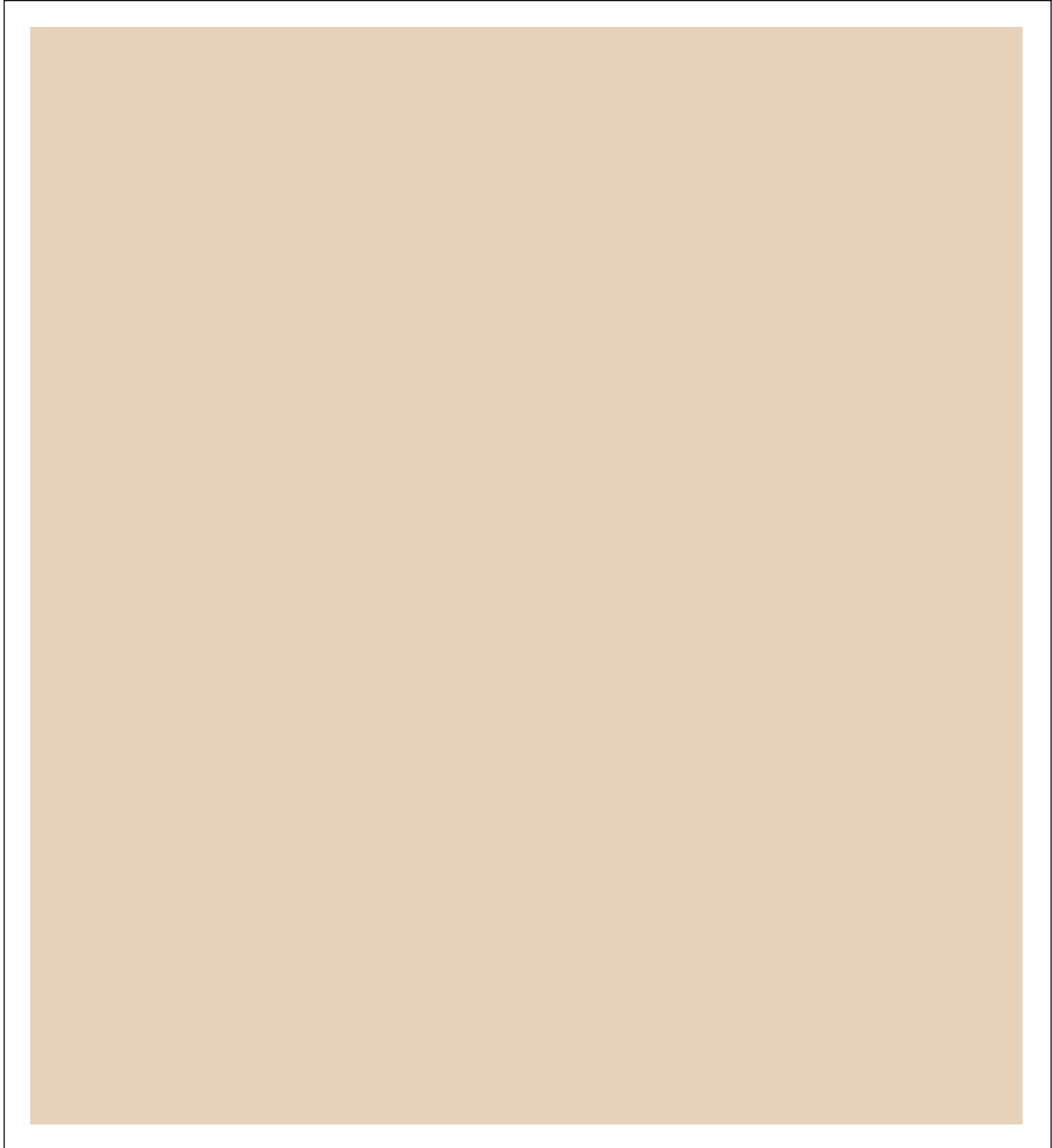
SW 6115

TOTALLY TAN



Cleveland State University

Office of the University Architect



ACCENT PAINT

APRIL 2024

SHERWIN WILLIAMS

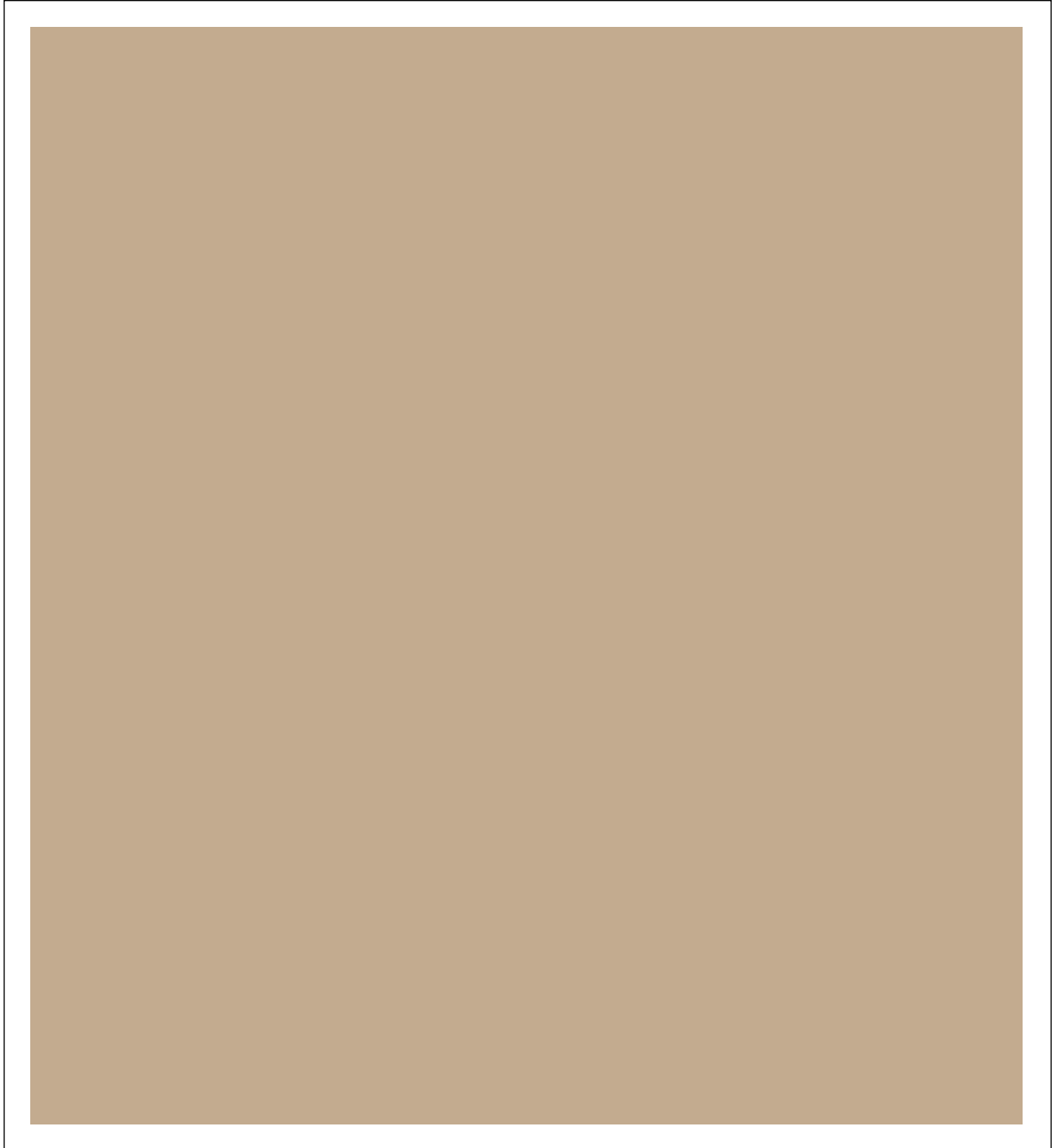
SW 6106

KILIM BEIGE



Cleveland State University

Office of the University Architect



ACCENT PAINT

APRIL 2024

SHERWIN WILLIAMS

SW 7690

TOWNHALL TAN



Cleveland State University

Office of the University Architect

RUBBER FLOORING STANDARDS

Finish Standards are based upon the ability of spaces to be “maintainable and transferrable”. Standardized colors provide a more cohesive look to the campus as a whole, as well as allowing for more efficient Zone Maintenance. Several deciding factors went into these selections, including the ability to hide wear/mars (dark colors), recycled content, and the ability to be recycled/reprocessed upon removal.

RUBBER WALL BASE:

Specifications: Johnsonite, 4” H x 1/8” thick, toed, roll/coil goods

Base Color:	20	Charcoal	Matching Paint:	SW 7075	Web Gray
	63	Burnt Umber		SW 7069	Iron Ore
	40	Black		SW 6258	Tricorn Black
	471	Bok Choy – <i>Innerlink only</i>		SW custom	University Green

RUBBER TILE:

Specifications: Mannington, Colorspec, 18” x 18” x 1/8” thick, textured

Tile Color:	027	Agate Gray
	194	Redwood Forest



Cleveland State University

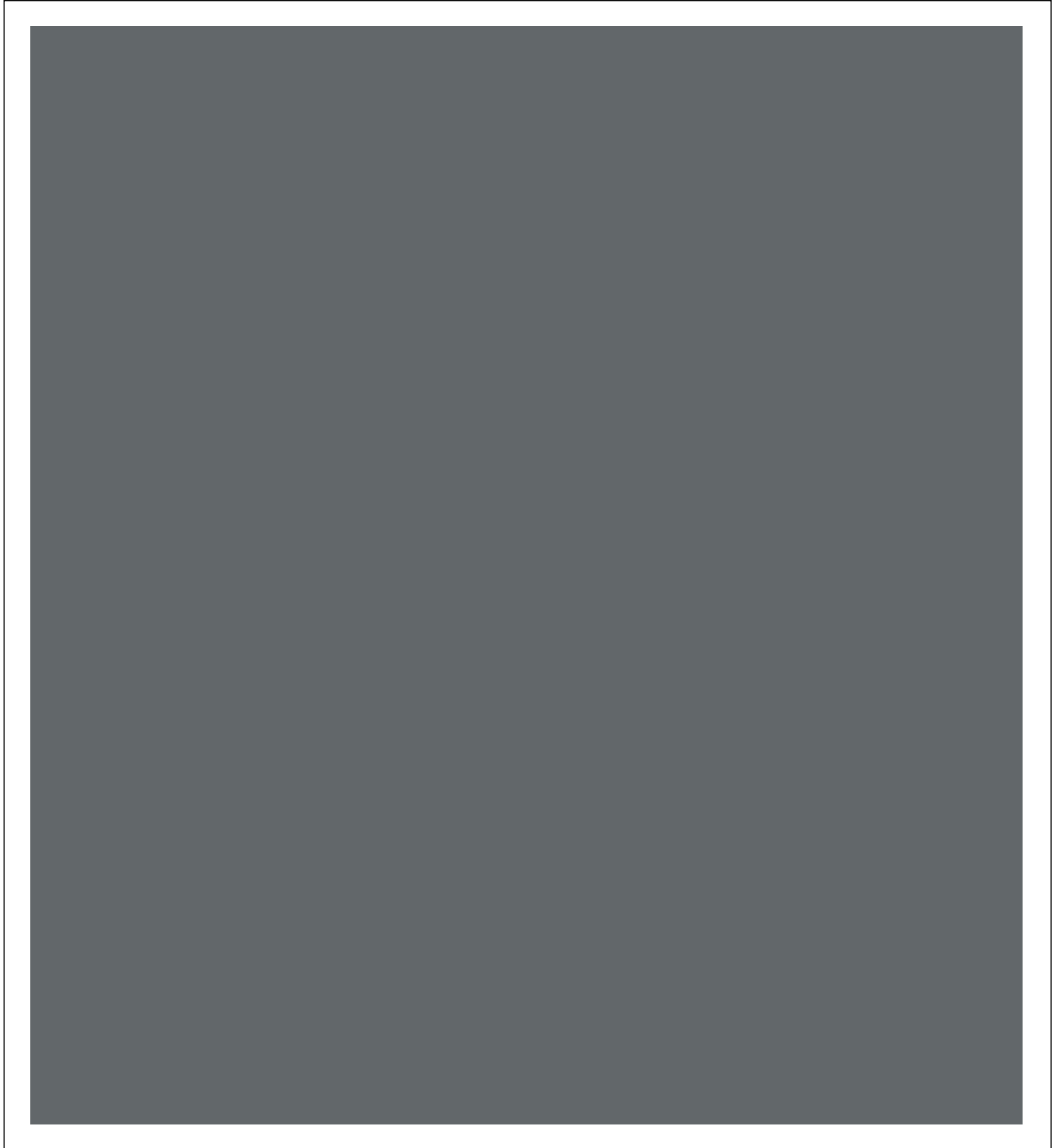
Office of the University Architect

RUBBER SAMPLES



Cleveland State University

Office of the University Architect



RUBBER BASE

MARCH 2014

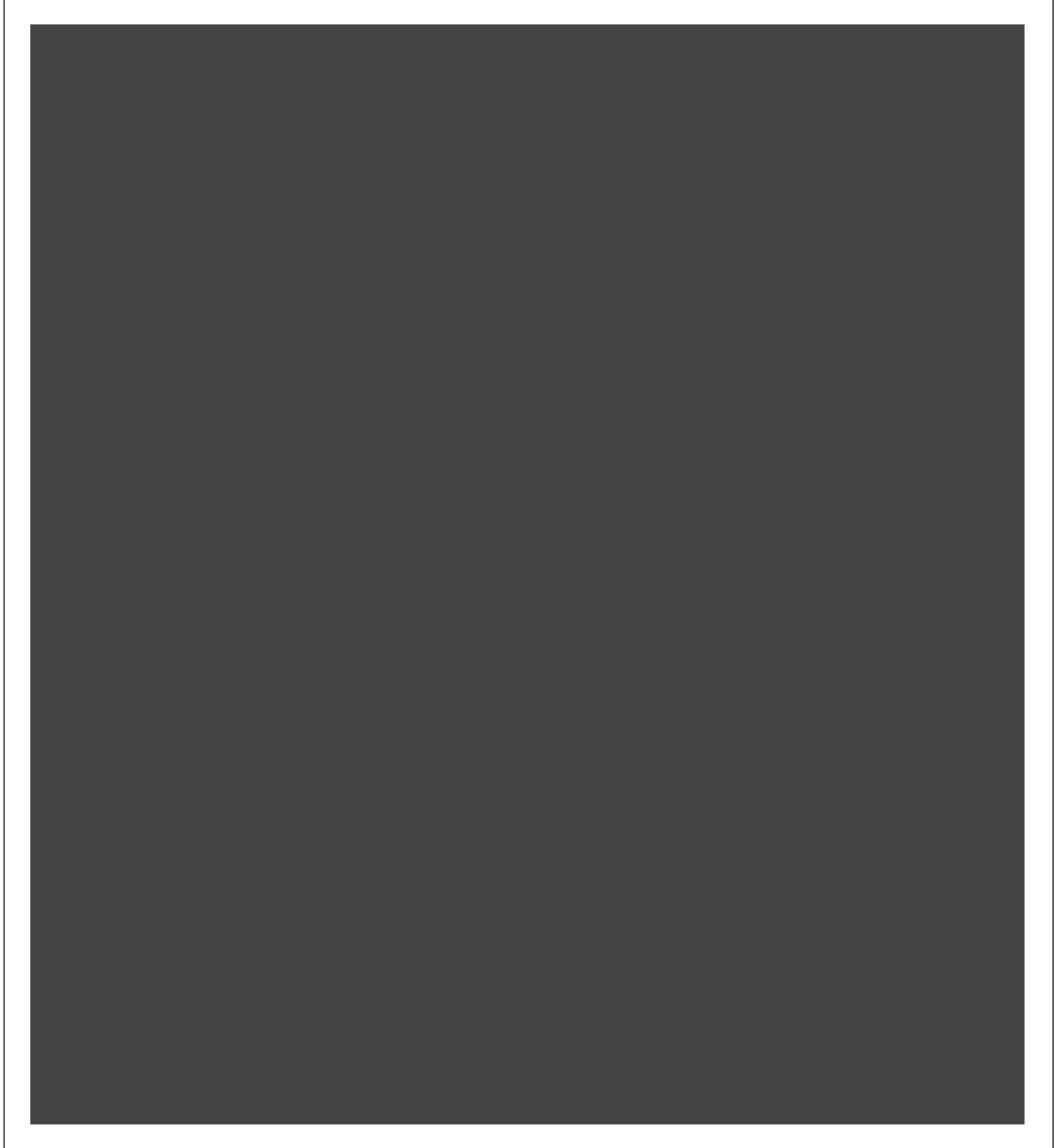
JOHNSONITE
20 CHARCOAL

Matching Paint:
SW 7075 WEB GRAY



Cleveland State University

Office of the University Architect



RUBBER BASE

MARCH 2014

JOHNSONITE
63 BURNT UMBER

Matching Paint:
SW 7069 IRON ORE



Cleveland State University

Office of the University Architect



RUBBER BASE

MARCH 2014

JOHNSONITE

40 BLACK

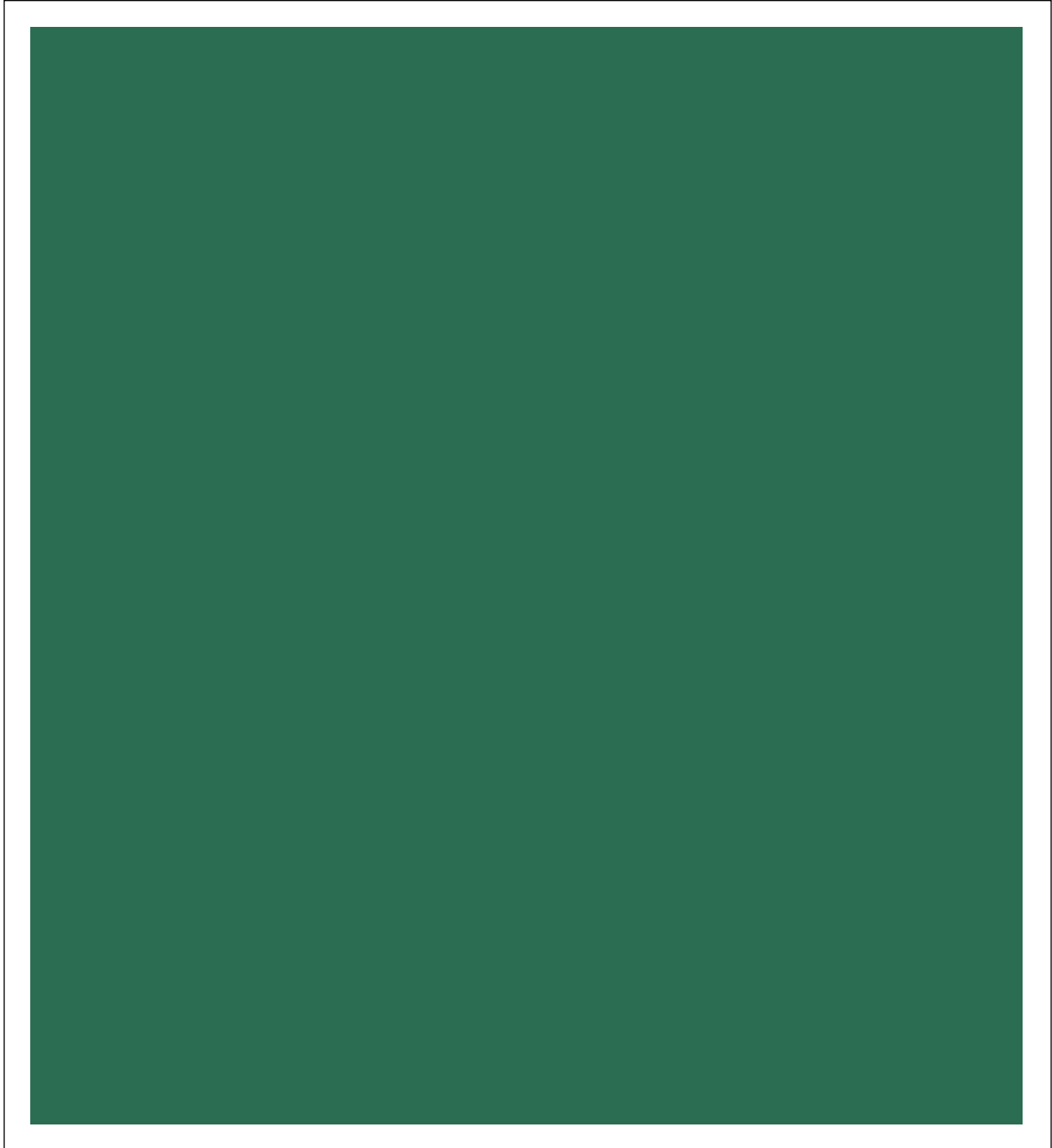
Matching Paint:

SW 6258 TRICORN BLACK



Cleveland State University

Office of the University Architect



RUBBER BASE

APRIL 2024

JOHNSONITE
471 BOK CHOY

Matching Paint:
SW University Green



Cleveland State University

Office of the University Architect



RUBBER TILE

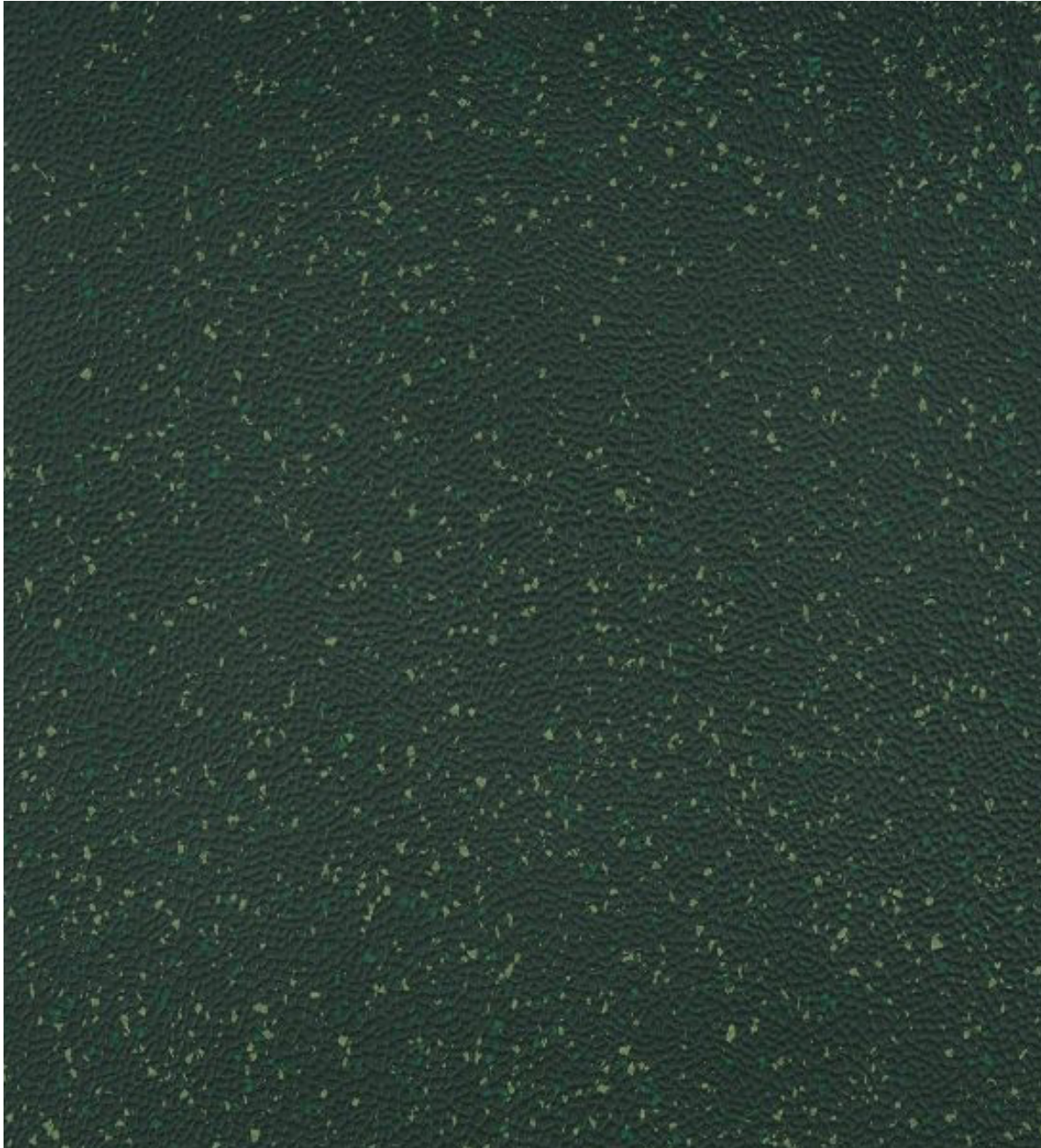
APRIL 2024

MANNINGTON
COLORSPEC TEXTURED
AGATE GRAY 027



Cleveland State University

Office of the University Architect



RUBBER TILE

APRIL 2024

MANNINGTON
COLORSPEC TEXTURED
REDWOOD FOREST 194
(Green)



Cleveland State University

Office of the University Architect

CARPET STANDARDS

Finish Standards are based upon the ability of spaces to be “maintainable and transferrable”. Standardized products provide a more cohesive look to the campus as a whole, as well as allowing for more efficient Zone Maintenance. Several deciding factors went into these selections, including cost (under \$25 per sq. yd. on state contract), maintenance (Antron 6/6 nylon, solution dyed), availability (perceived lifespan of pattern), and recycled content (as noted below).

PATTERN #1: BITRATE / DARK GREEN 106299

Specifications: Interface, 10x40 plank, ashlar installation

Location: Corridors

PATTERN #2: UPLOAD / LIGHT GREEN 106291

Specifications: Interface, 10x40 plank, ashlar installation

Location: Corridors Accent

PATTERN #3: AERIAL AE312 / SMOKE ACCENT 105411

Specifications: Interface, 20x20 tile, brick installation

Location: Classrooms, Computer Labs

PATTERN #4: AE311 / SMOKE 104674

AE313 / SMOKE / APPLE 104885

Specifications: Interface, 10x40 plank, ashlar installation

Location: Classrooms, Computer Labs

PATTERN #5: SOURCE MATERIAL / IRON 106307

Specifications: Interface, 10x40 plank, ashlar installation

Location: Support Areas

PATTERN #6: DETOURS / SLATE 104716

Specifications: Interface, 20x20 tile, monolithic installation

Location: Support Areas

PATTERN #7: DETOURS / PEWTER 104719

Specifications: Interface, 20x20 tile, monolithic installation

Location: Support Areas

PATTERN #8: CT113 / STEEL 104360

Specifications: Interface, 10x40 plank, ashlar installation

Location: BH, WH



Cleveland State University

Office of the University Architect

PATTERN #9: DRIFTWOOD / MAHOGANY 104846

Specifications: Interface, 10x40 plank, ashlar installation

Location: SC

PATTERN #10: DETOURS / STEEL 104718

Specifications: Interface, 10x40 plank, monolithic installation

Location: MU

PATTERN #11: AERIAL AE312 / FOG ACCENT 105406

Specifications: Interface, 20x20 tile, brick installation

Location: RT, WH

PATTERN #12: PRIMARY STITCH / PURL ACCENT 102419

Specifications: Interface, 20x20 tile, brick installation

Location: RT, SI/SR

WALK-OFF: STEP & REPEAT SR999 / ONYX 104945 (prev. known as ENTRY LEVEL)

Specifications: Interface, 20x20 tile, non-directional installation

Location: Entries, Elevators

PLEASE NOTE: Quarter-turn installations are NOT acceptable.



Cleveland State University

Office of the University Architect

CARPET SAMPLES



Cleveland State University

Office of the University Architect



CARPET #1

APRIL 2024

INTERFACE

BITRATE

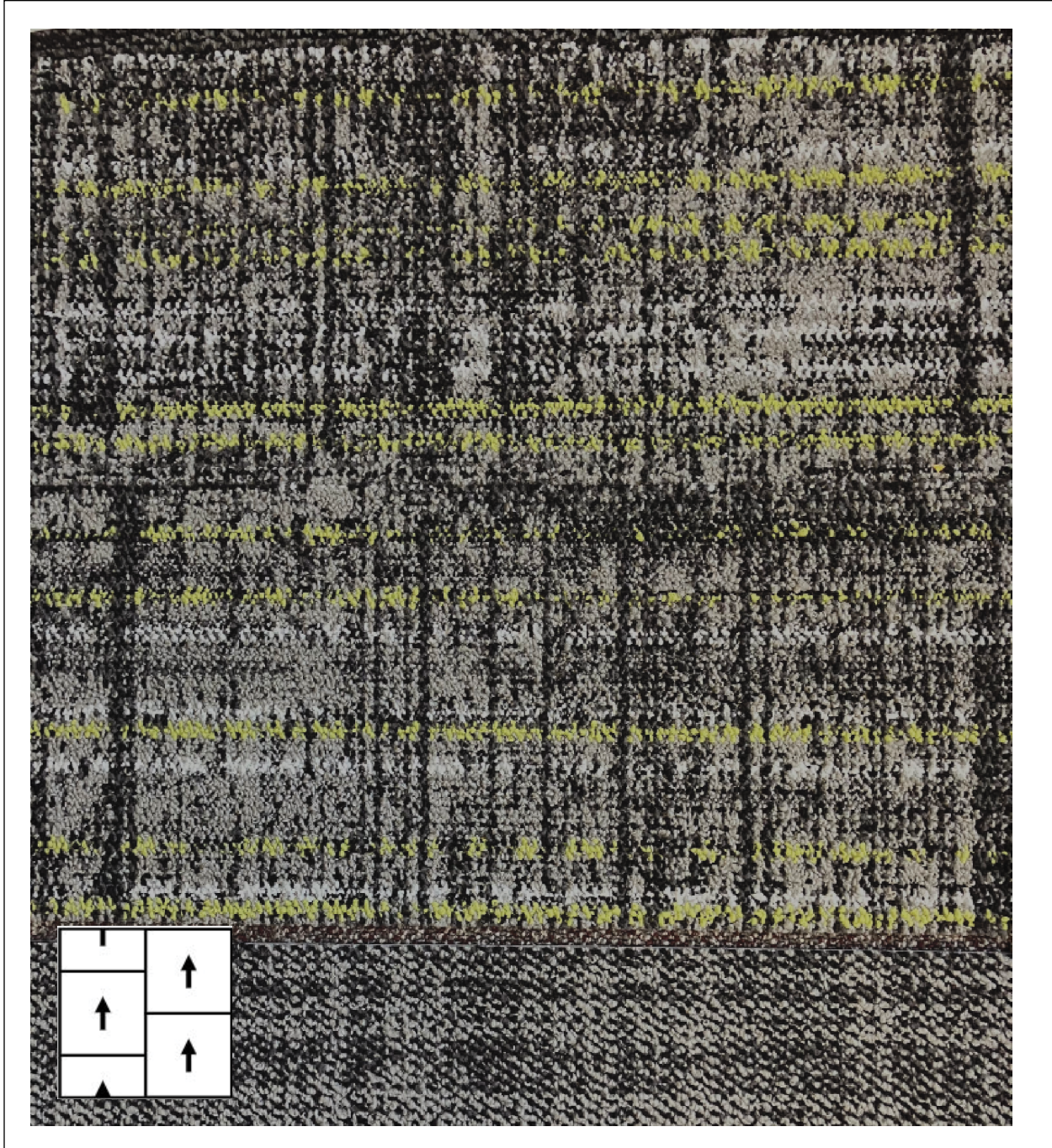
DARK GREEN 106299

Ashlar Installation



Cleveland State University

Office of the University Architect



CARPET #2

APRIL 2024

INTERFACE
UPLOAD
LIGHT GREEN 106291
Ashlar Installation



Cleveland State University

Office of the University Architect



CARPET #3

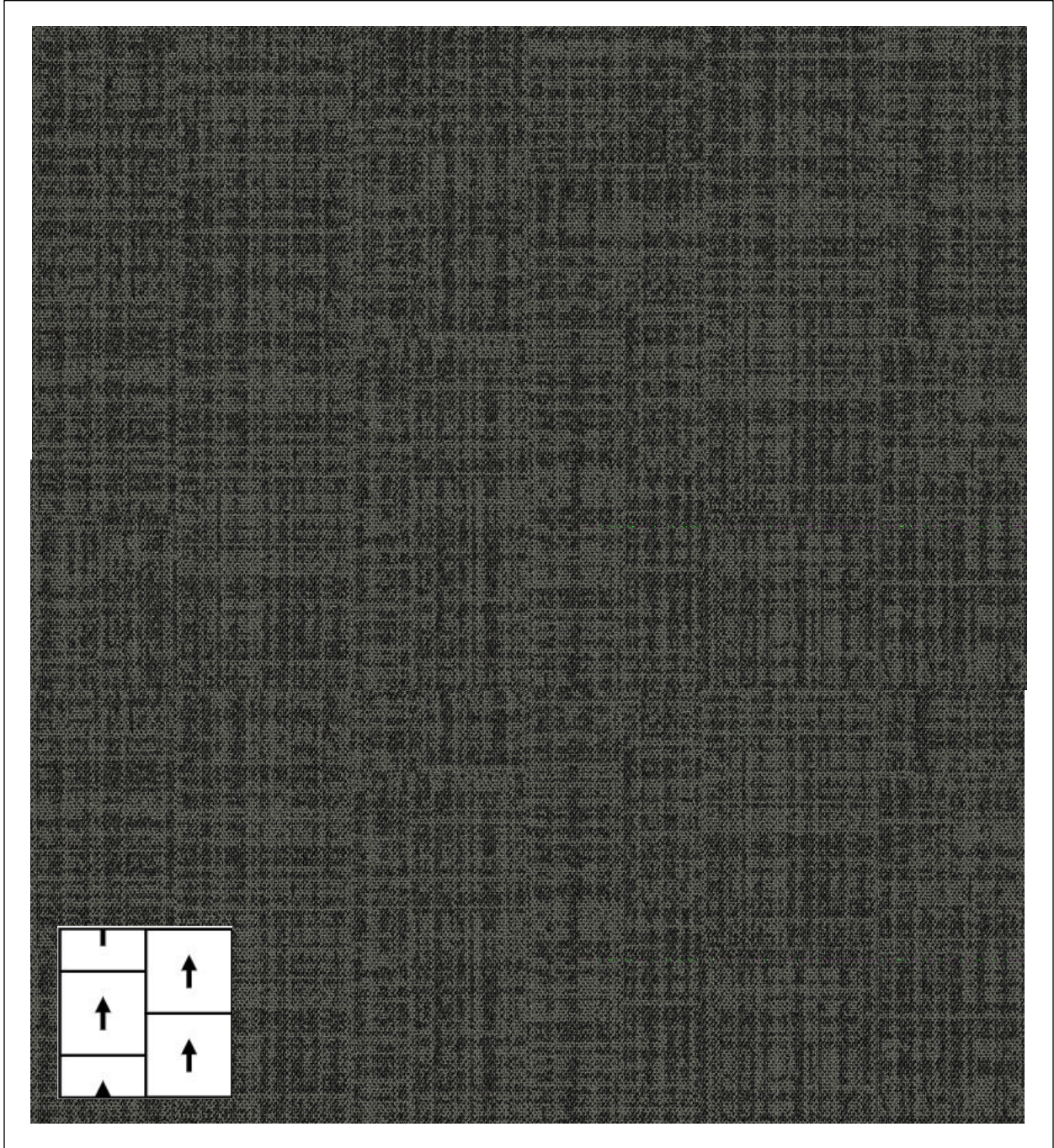
JUNE 2018

INTERFACE
AERIAL AE312
SMOKE ACCENT 105411
Brick Installation



Cleveland State University

Office of the University Architect



CARPET #4

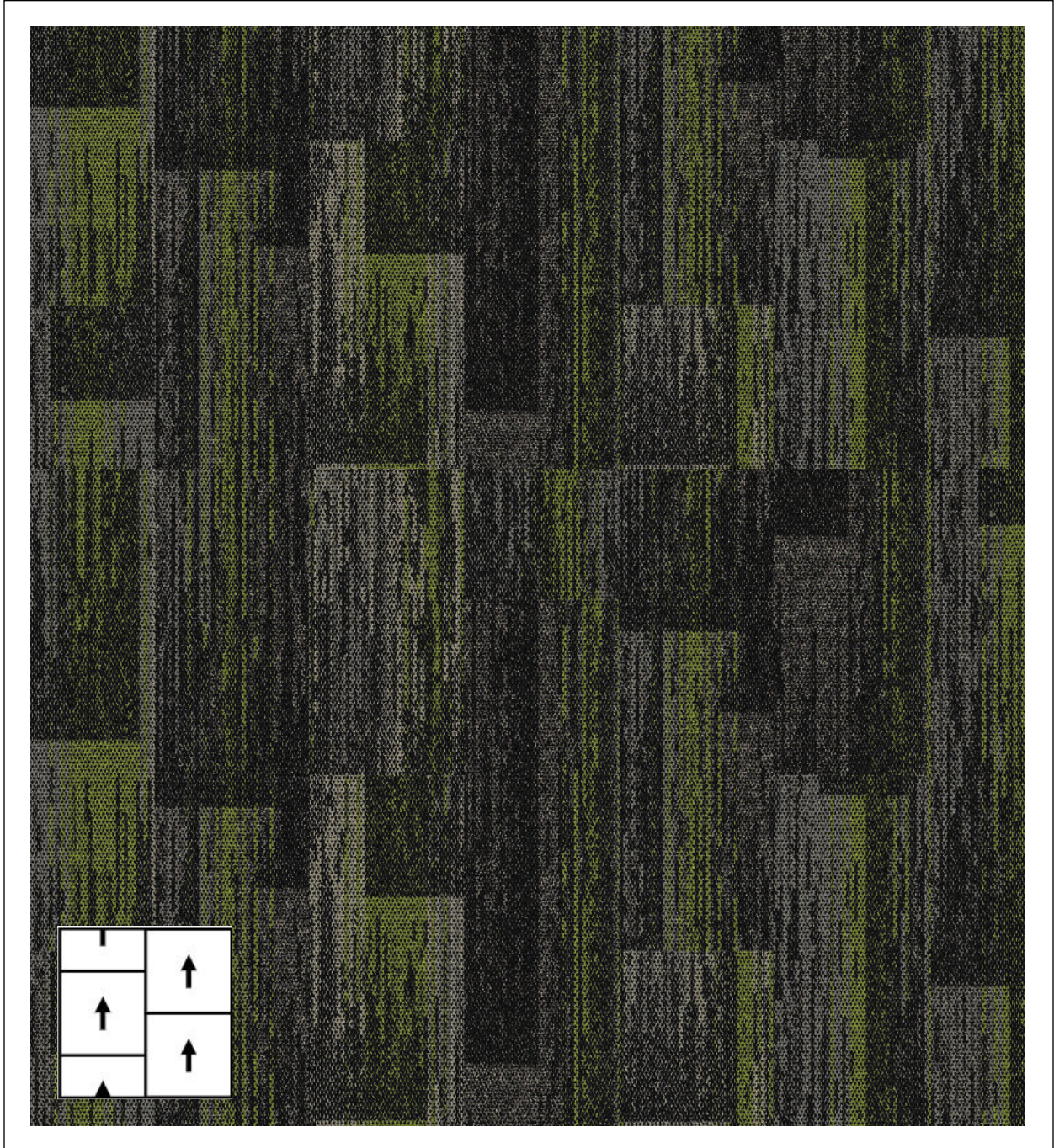
APRIL 2024

INTERFACE
SOURCE MATERIAL
IRON 106307
Ashlar Installation



Cleveland State University

Office of the University Architect



CARPET #5

APRIL 2024

INTERFACE

AE311 / SMOKE 104674

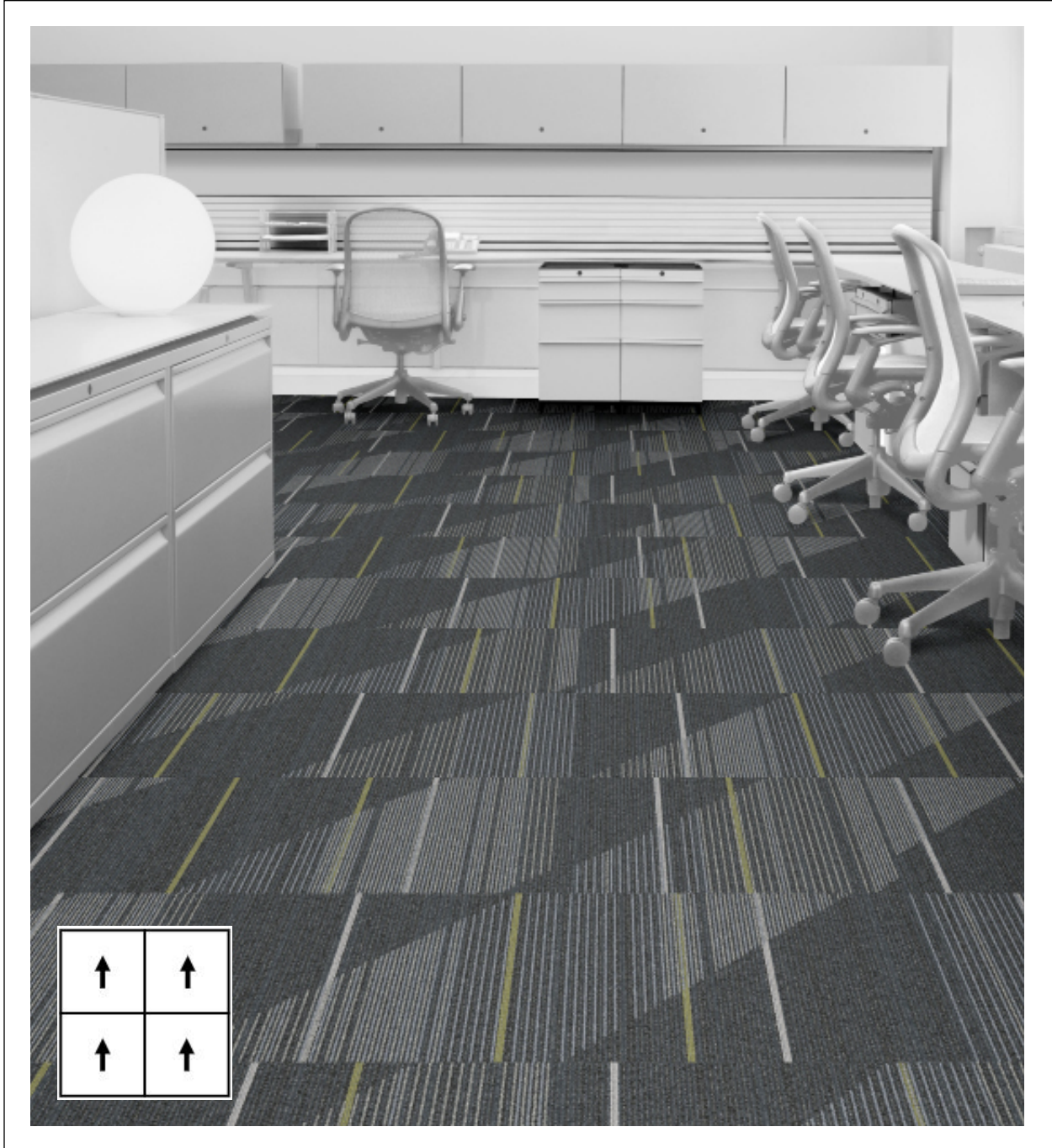
AE313 / SMOKE / APPLE 104885

Ashlar Installation



Cleveland State University

Office of the University Architect



CARPET #6

MARCH 2021

INTERFACE
DETOURS
SLATE 104716
Monolithic Installation



Cleveland State University

Office of the University Architect



CARPET #7

MARCH 2021

INTERFACE
DETOURS
PEWTER 104719
Monolithic Installation



Cleveland State University

Office of the University Architect



CARPET #8

APRIL 2024

INTERFACE
COMMON THEME CT113
STEEL 104360
Ashlar Installation



Cleveland State University

Office of the University Architect



CARPET #9

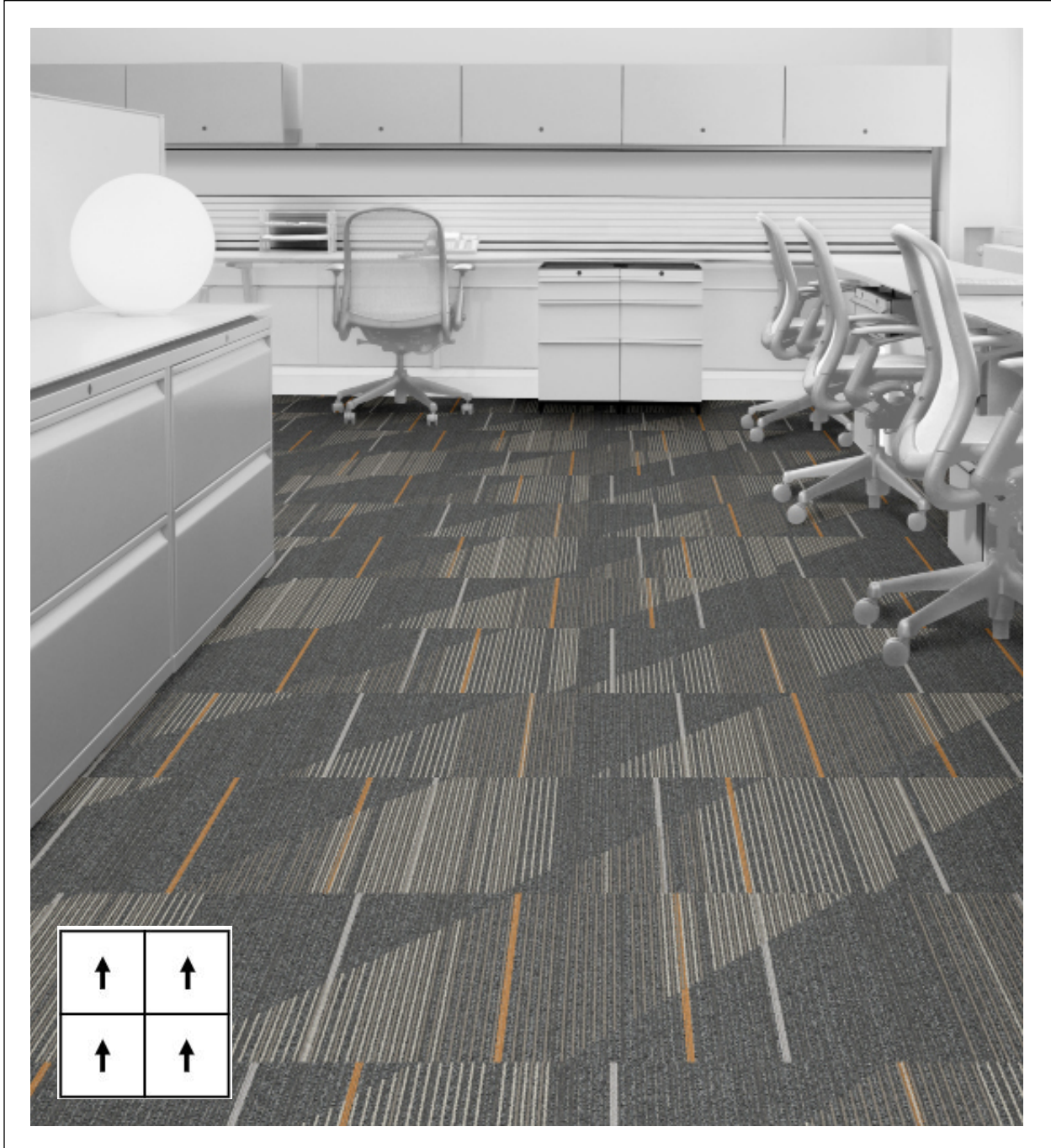
JUNE 2018

INTERFACE
DRIFTWOOD
MAHOGANY 104846
Ashlar Installation



Cleveland State University

Office of the University Architect



CARPET #10

MARCH 2021

INTERFACE
DETOURS
STEEL 104718
Monolithic Installation



Cleveland State University

Office of the University Architect



CARPET #11

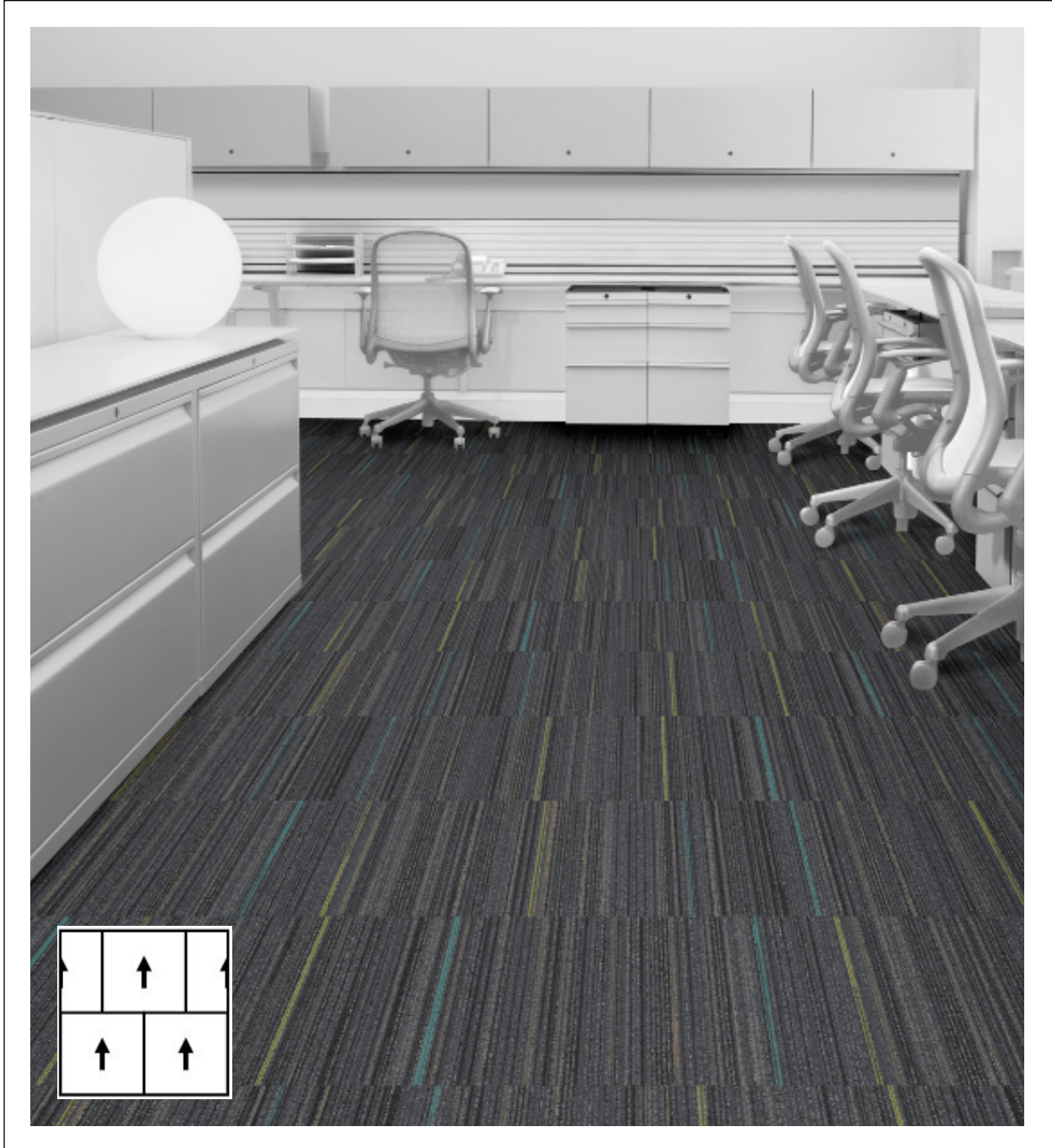
JUNE 2018

INTERFACE
AERIAL AE312
FOG ACCENT 105406
Brick Installation



Cleveland State University

Office of the University Architect



CARPET #12

MARCH 2014

INTERFACE
PRIMARY STITCH
PURL ACCENT 102419
Brick Installation



Cleveland State University

Office of the University Architect



WALK OFF TILE

MARCH 2014

INTERFACE
STEP & REPEAT SR999
(prev. Entry Level)
ONYX 104945
Non-Directional Installation